
LUNG CANCER SURGERY



Haider Ghaidan MD PhD.
Consultant Cardiothoracic Surgeon

2024-10-10

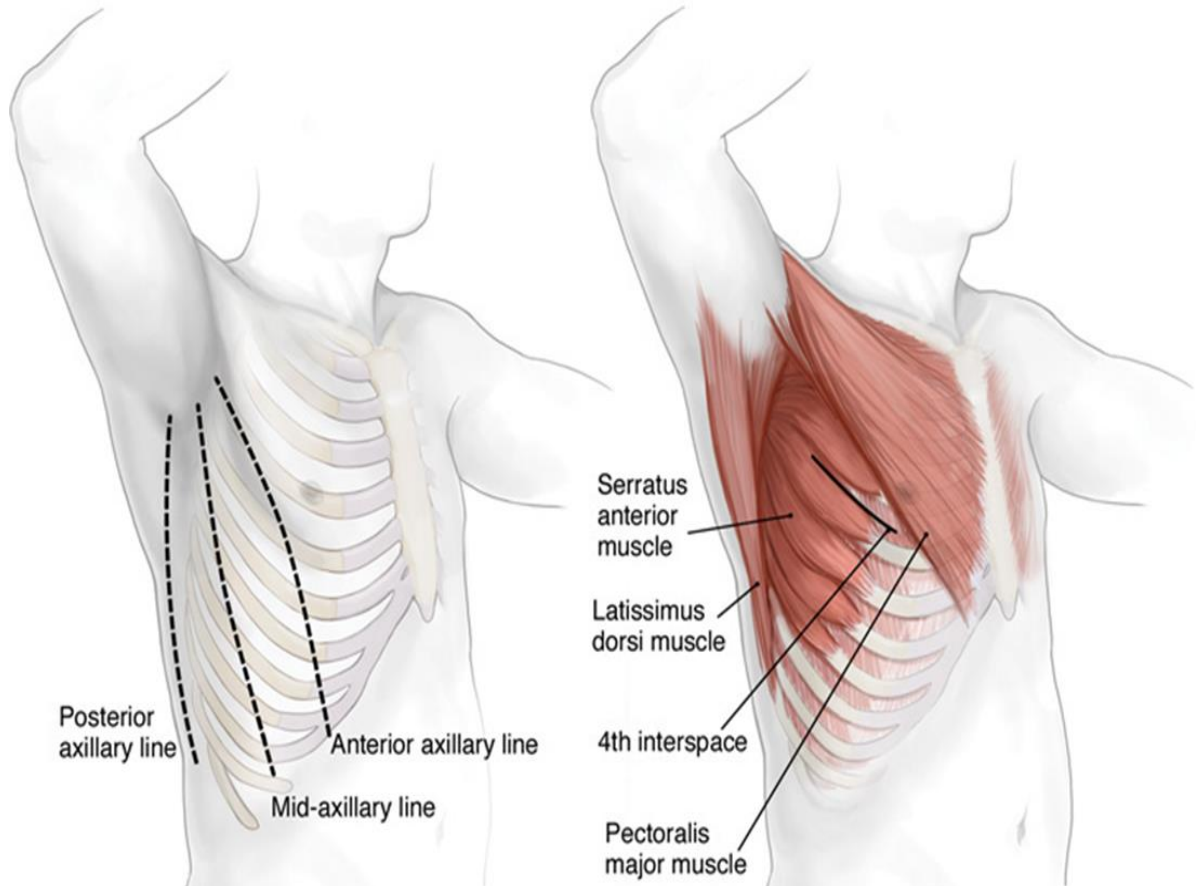
MODERN KIRURGI



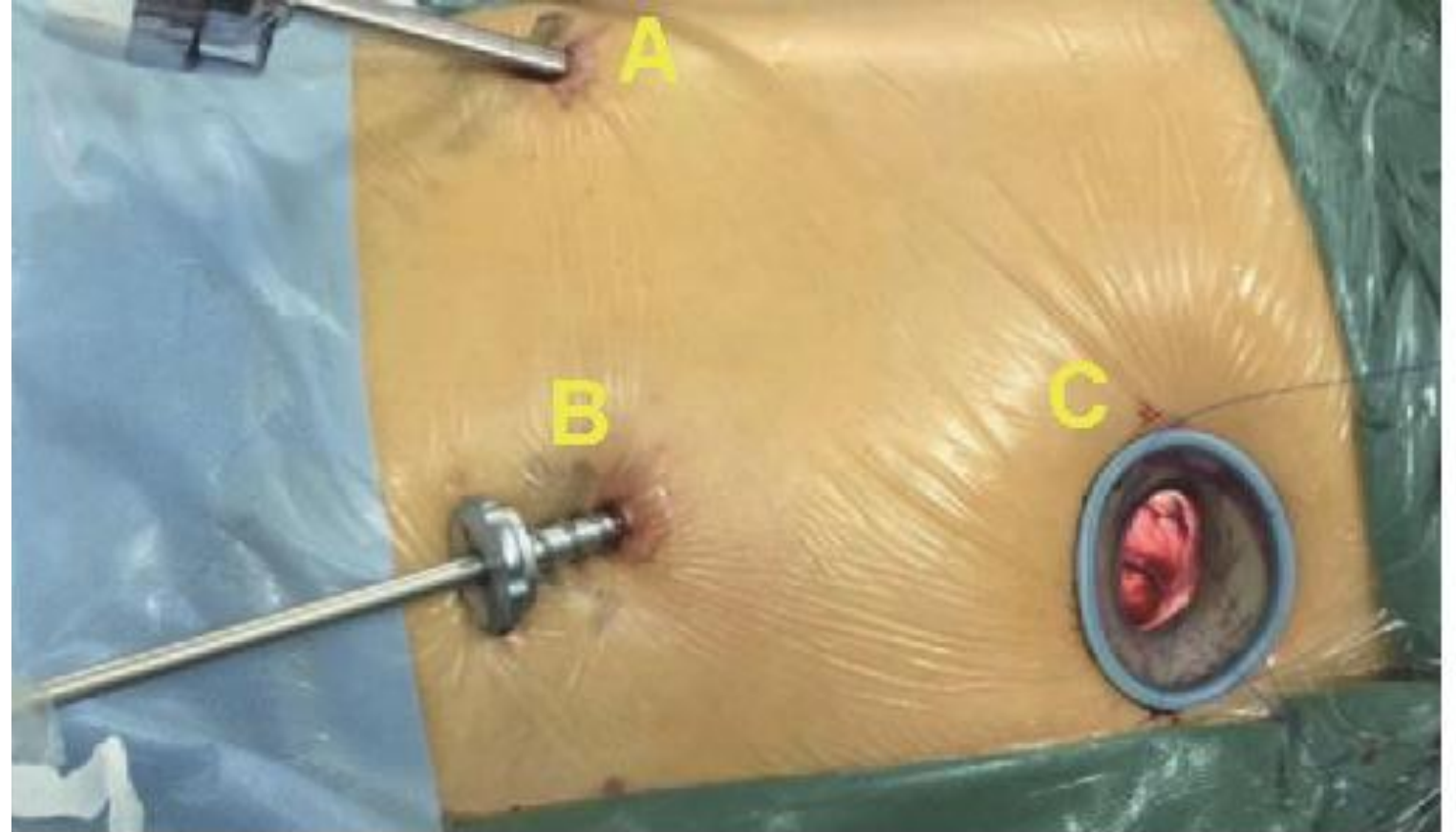
THORACIC SURGERY

- **VATS** 65-80%
- Thoracotomy
- RATS
- Sternotomy
- Others



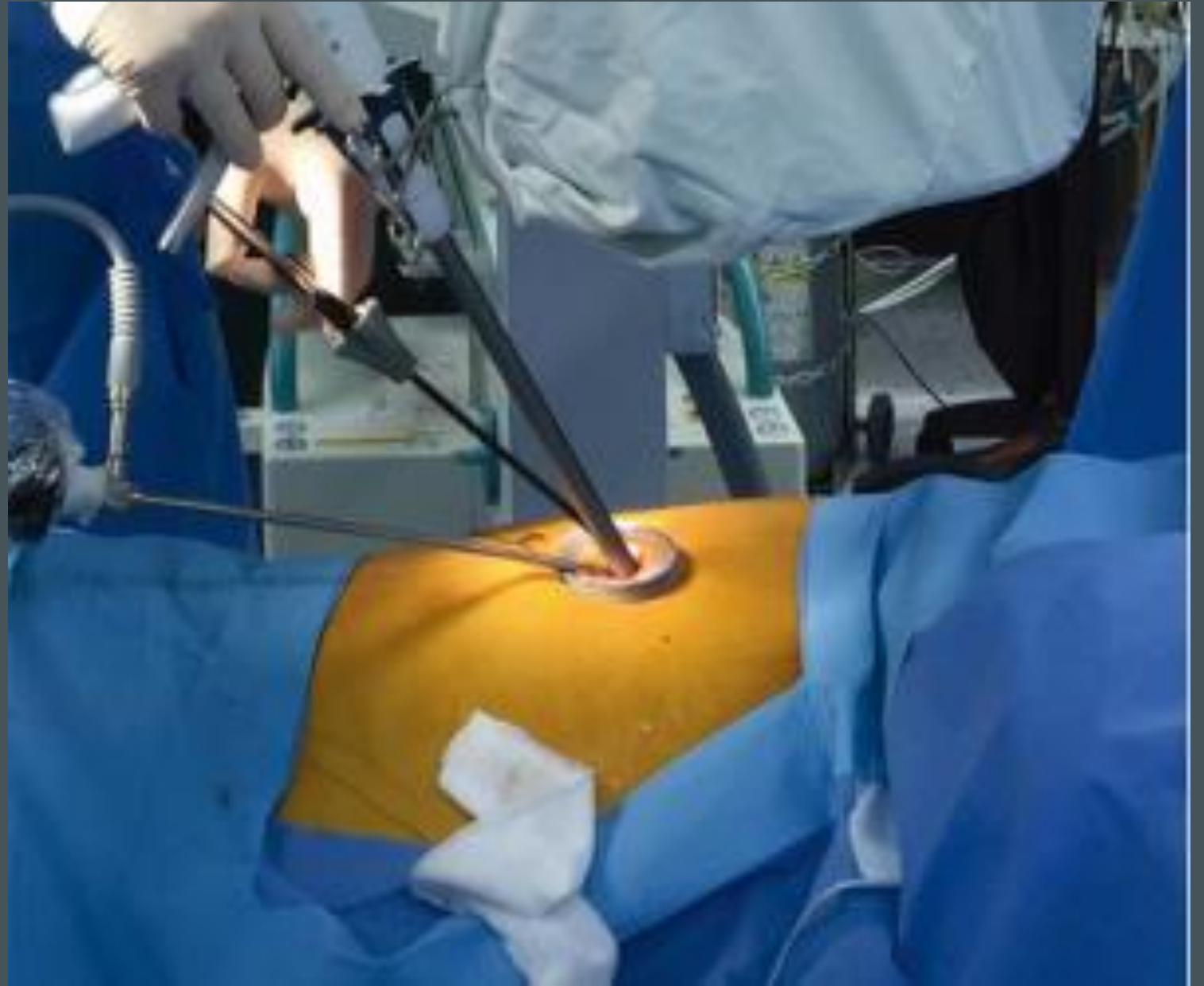


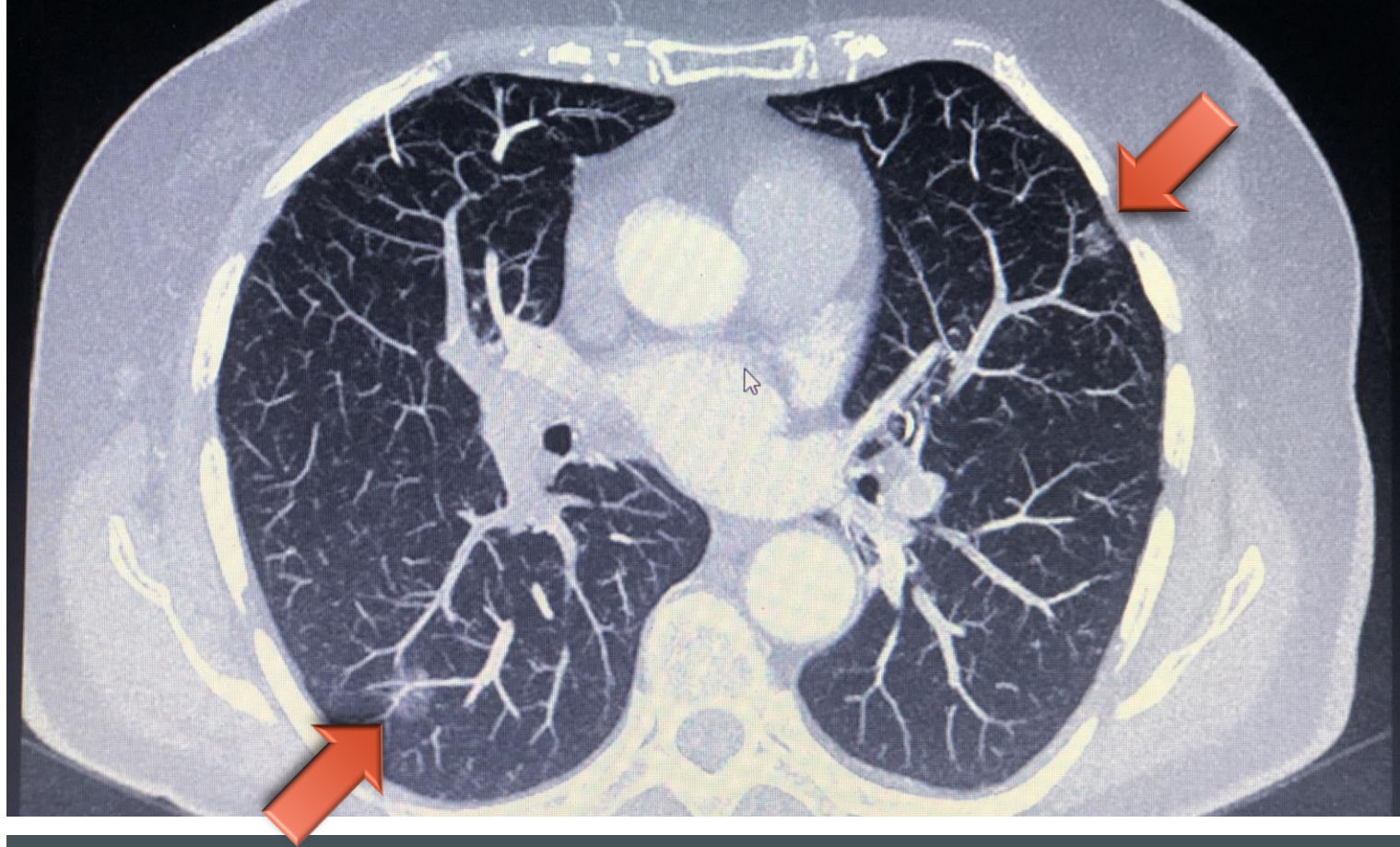
THORACOTOMY



MULTIPOINT VATS

UNIPOINT VATS

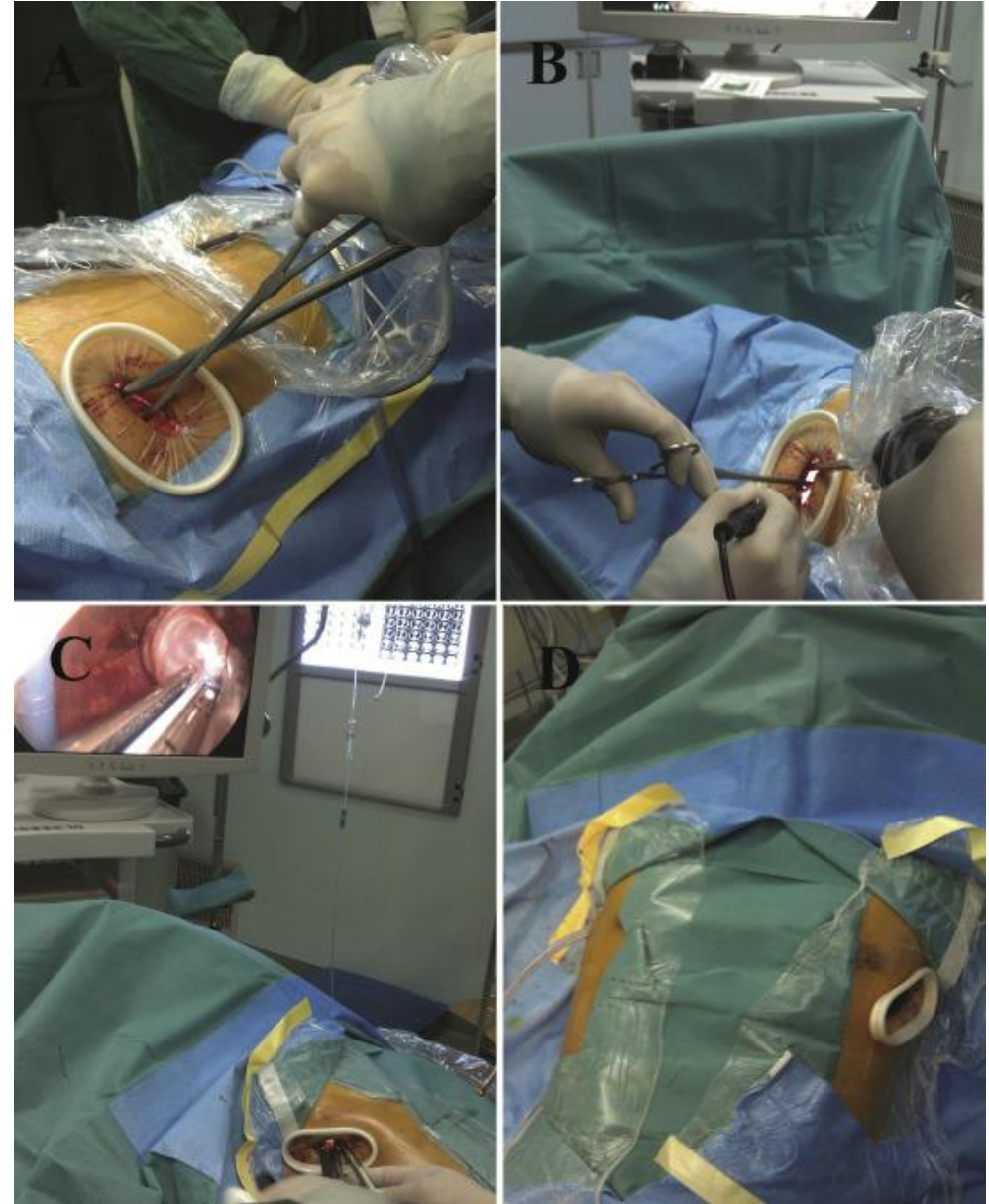


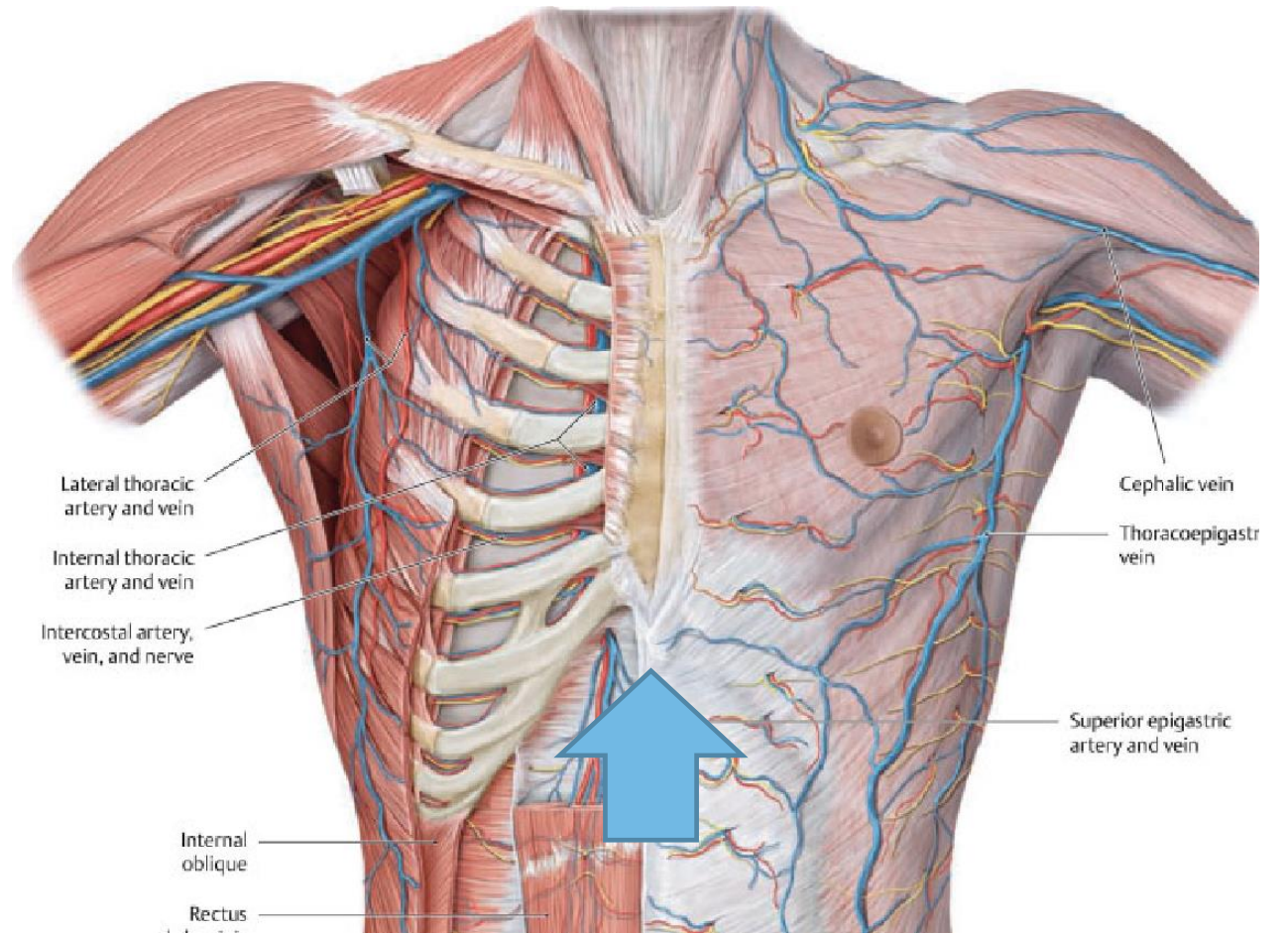
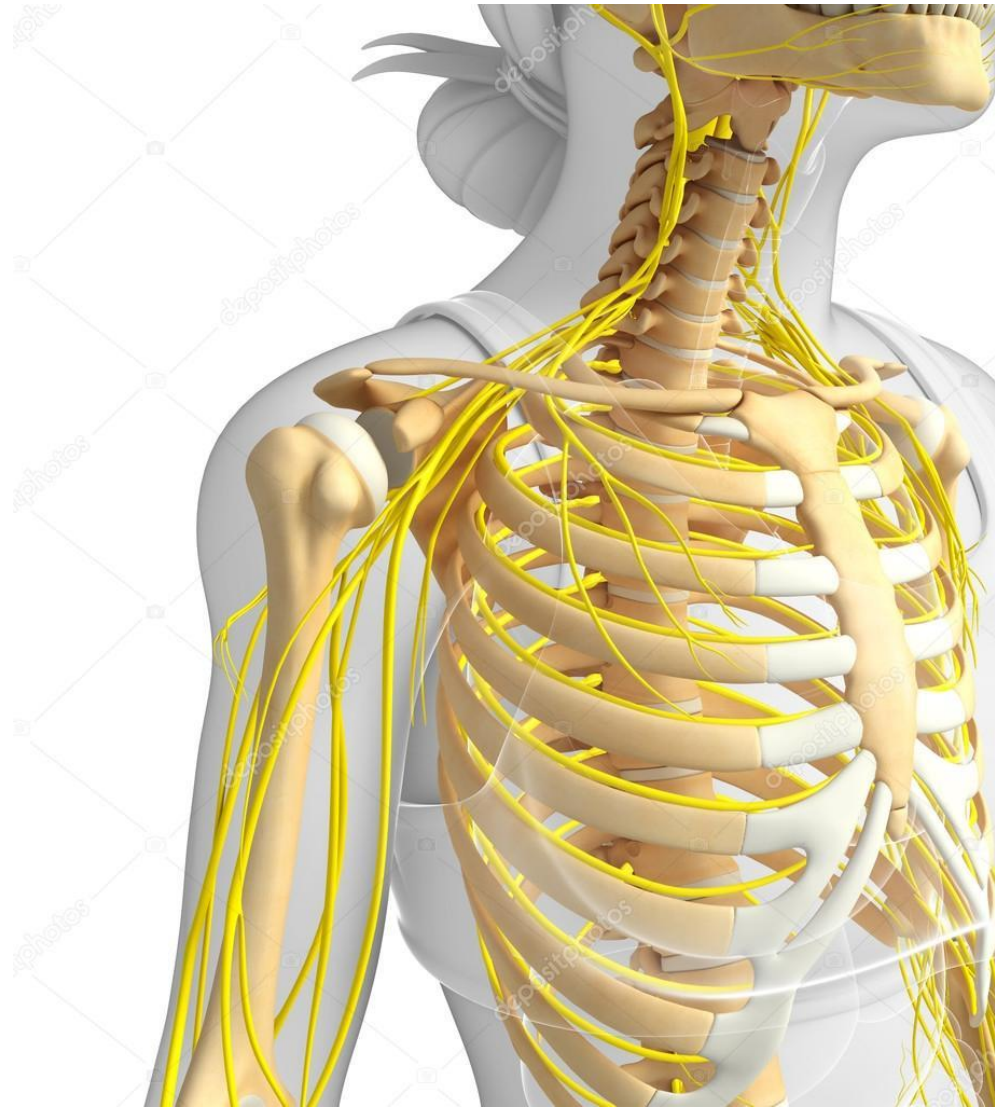


BILATERAL LESIONS

SU-VATS

Subxiphoid uniportal
video-assisted thoracoscopic



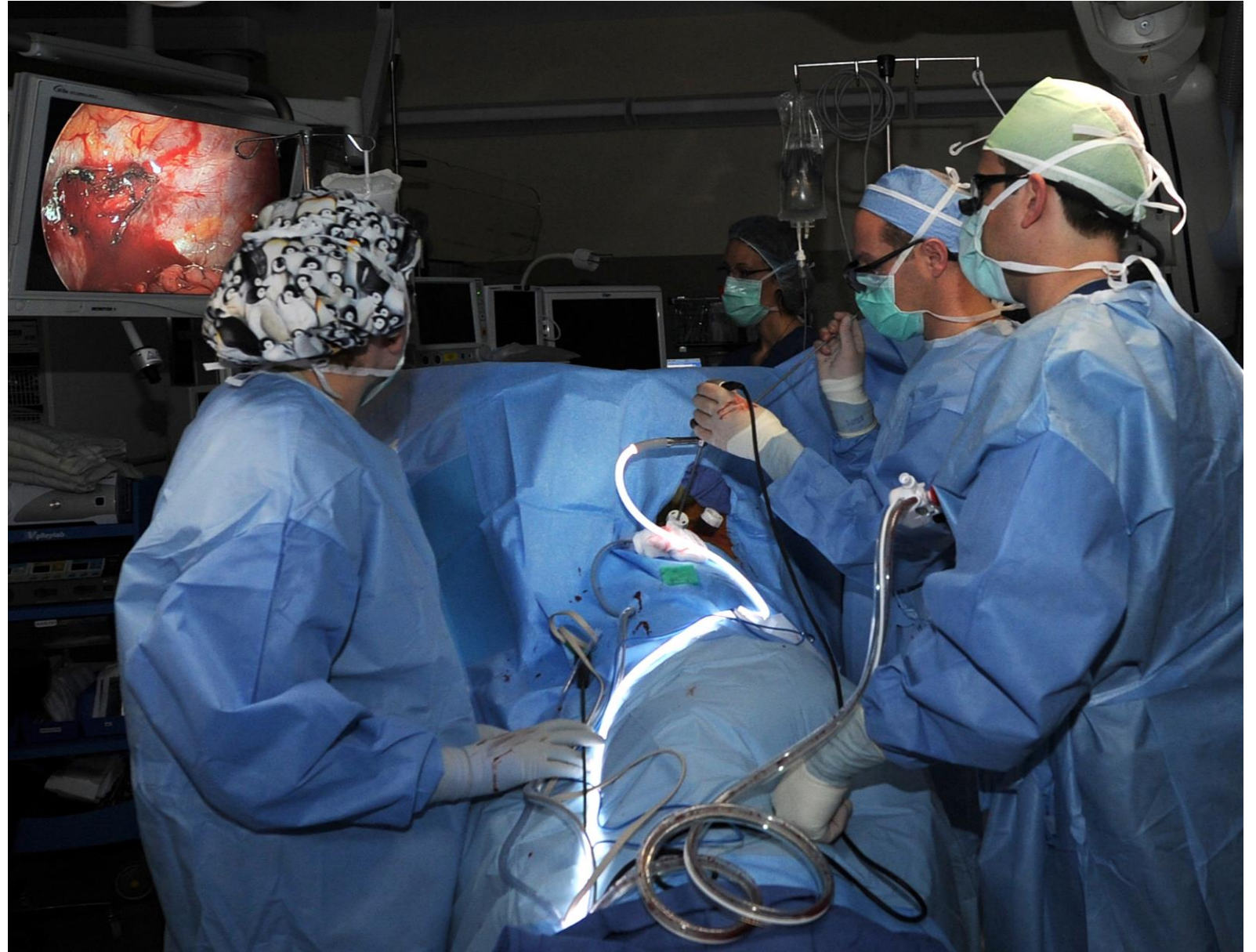




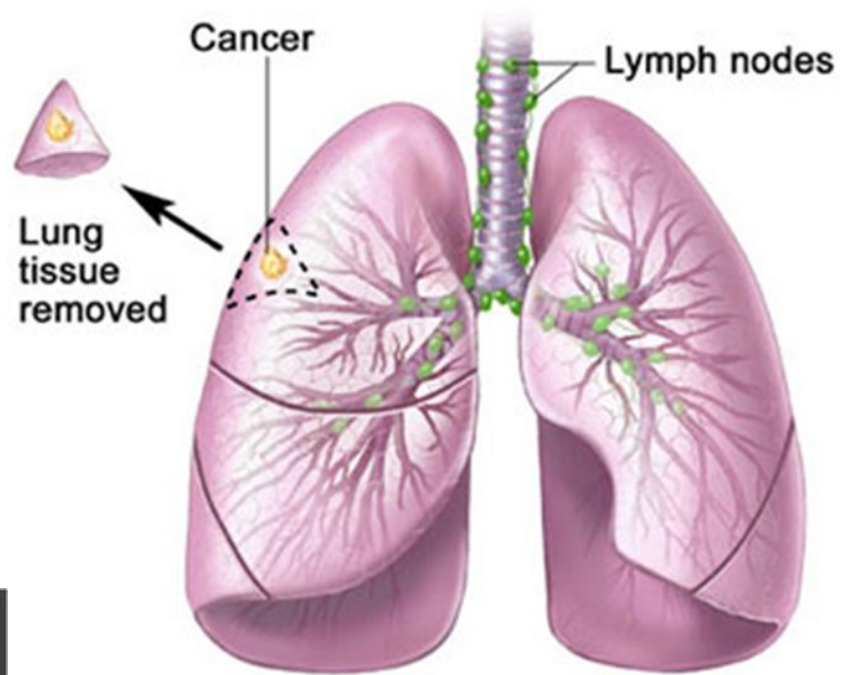
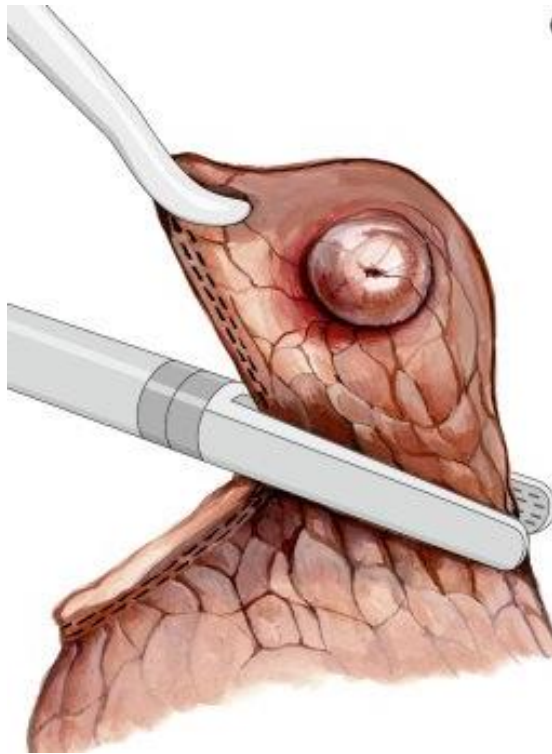
SUPINE POSITION

SUBXIPHOID VATS

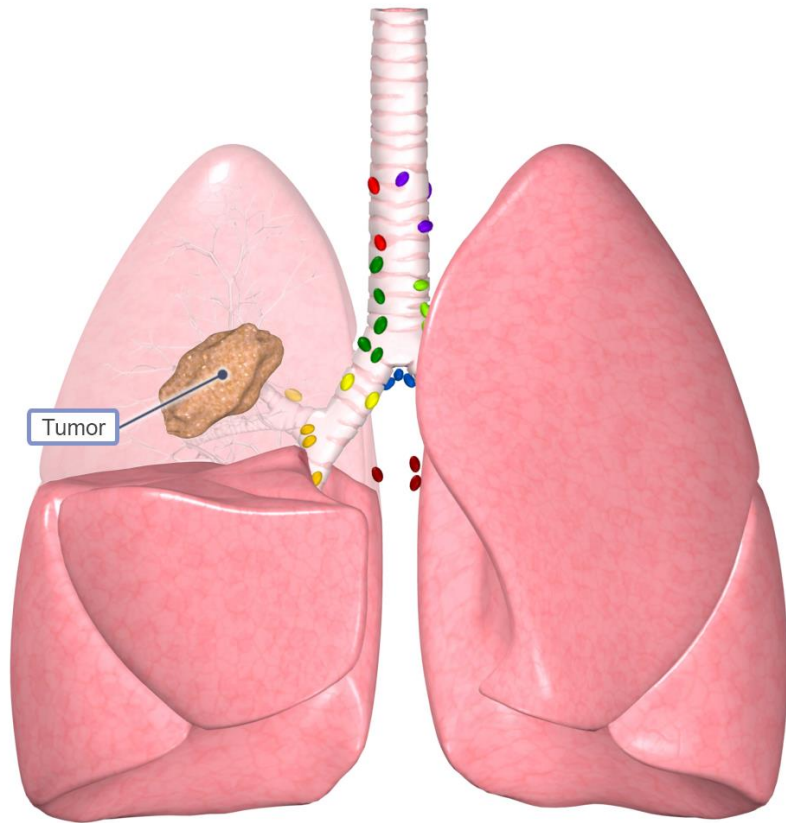
- Bilateral lung resections
- Bilateral emphysematous bullectomy
- Thymectomy
- Lymphadenopathy biopsy
- Biopsy of Mediastinal Tumors
- Pericardial Effusion



KILEXCISION

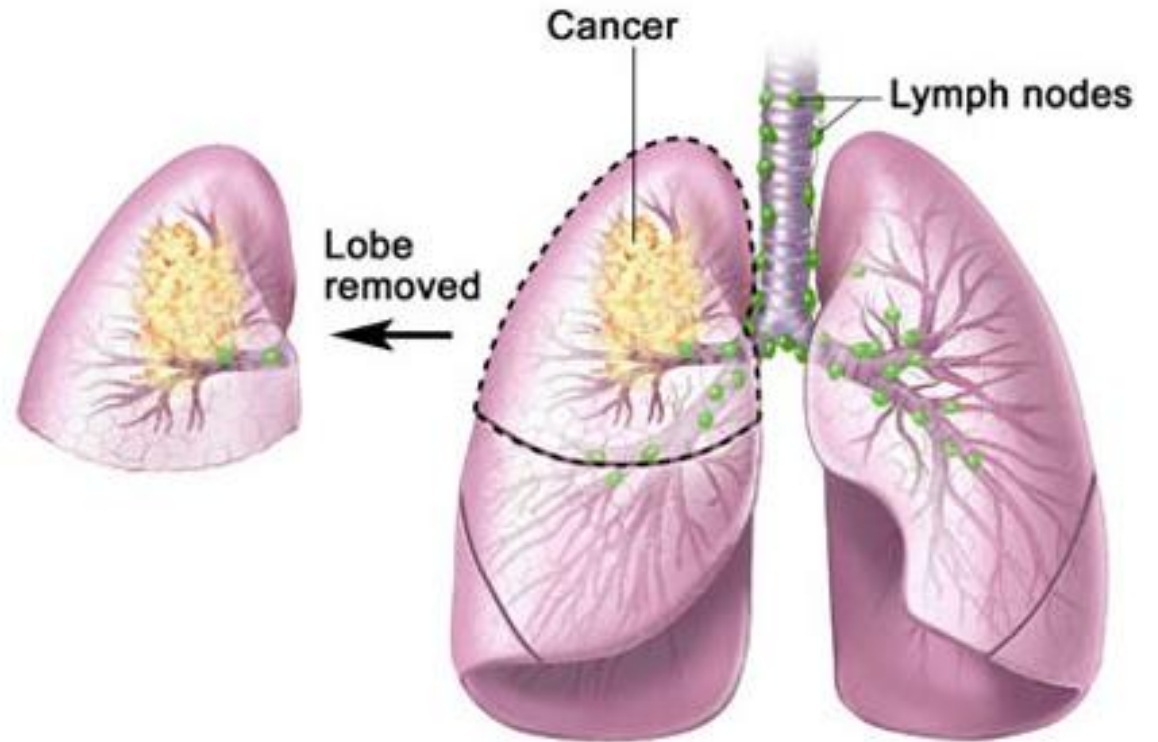


LOBECTOMY

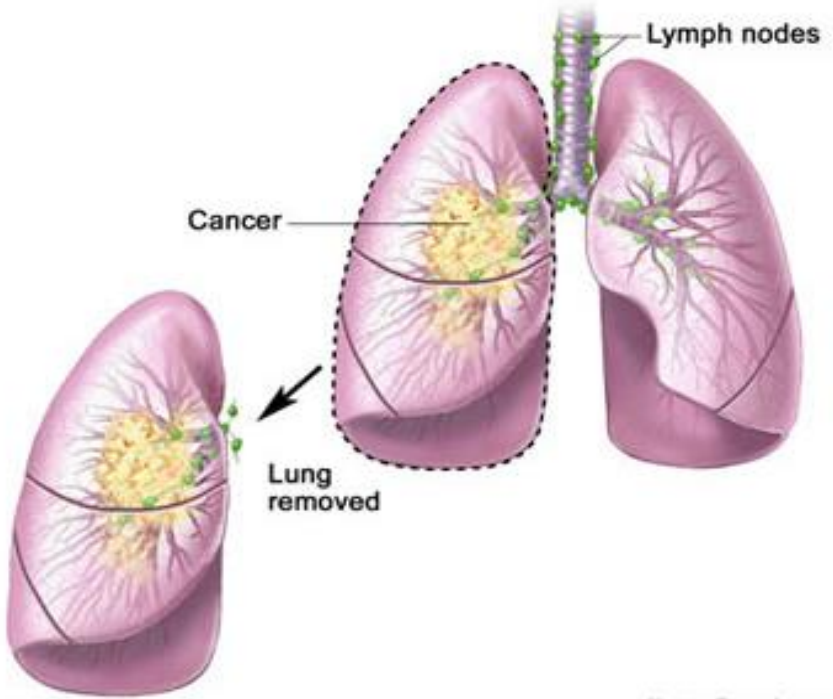
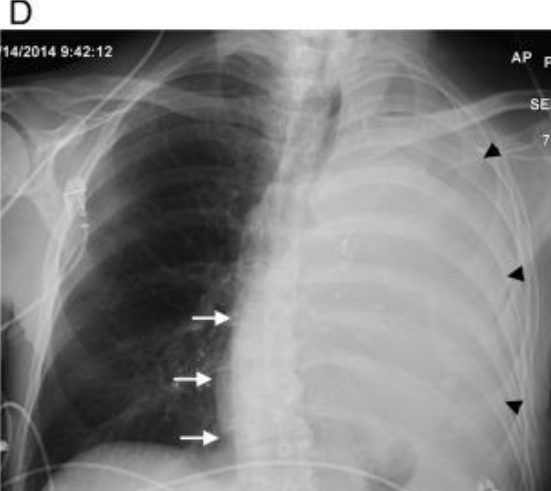
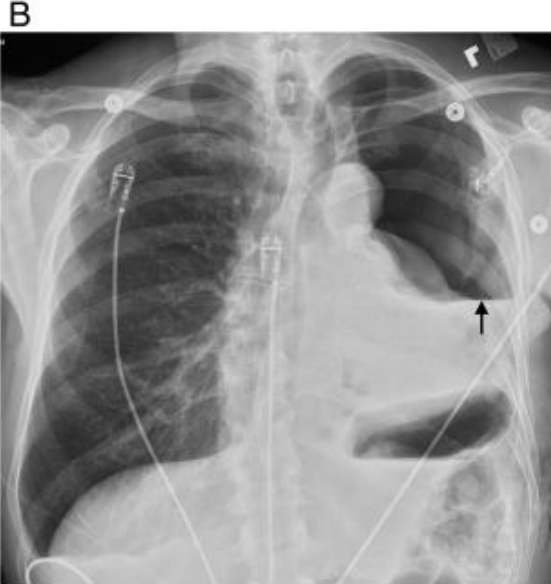
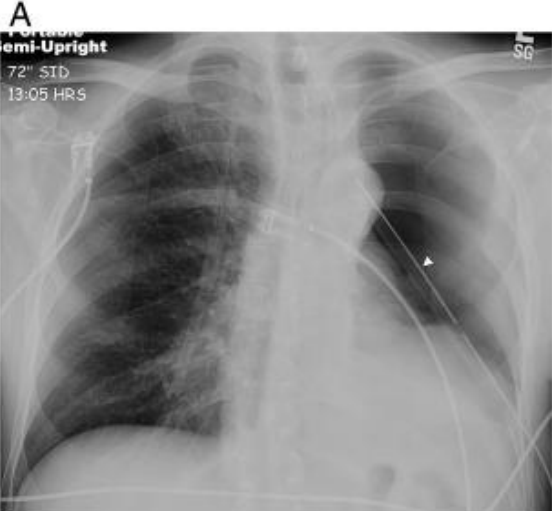


Lobectomy

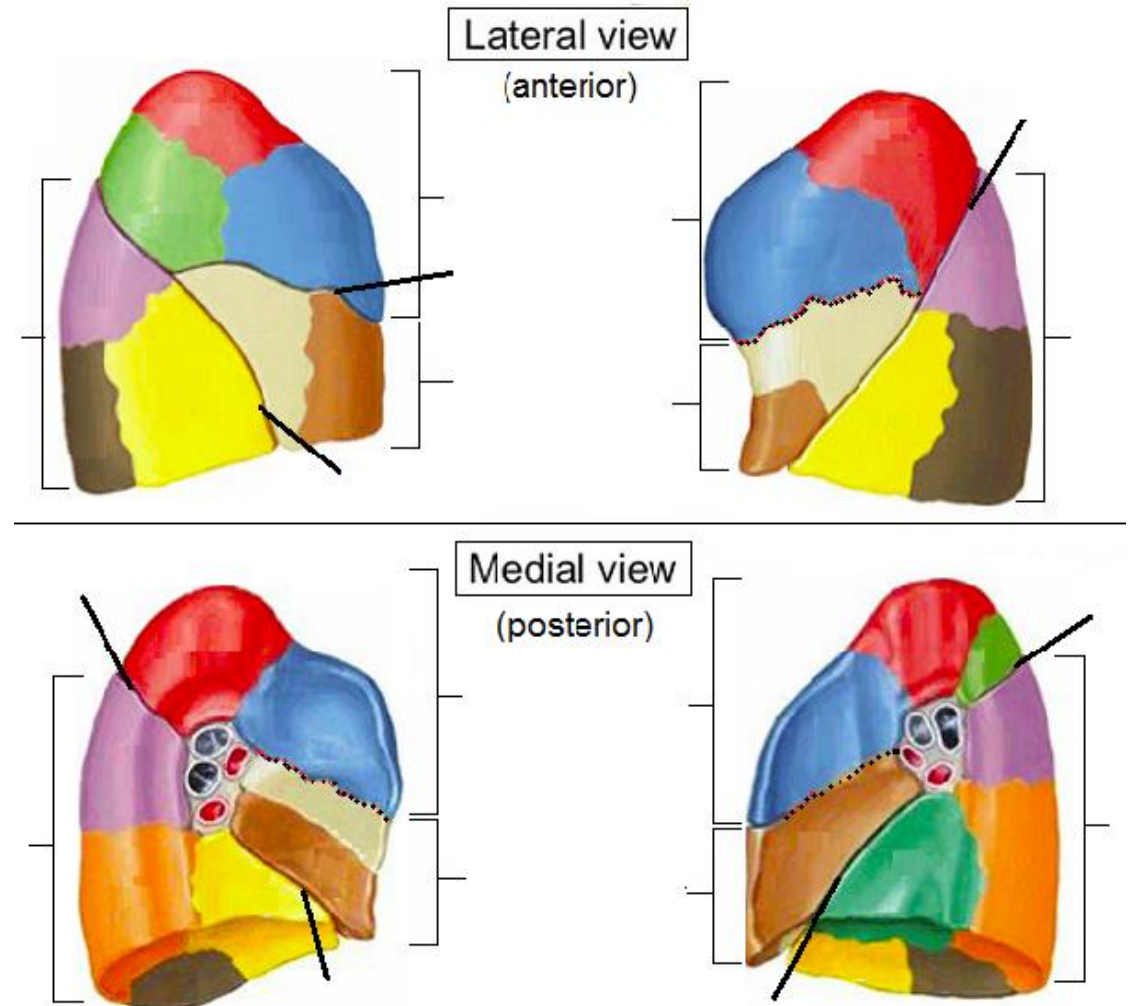
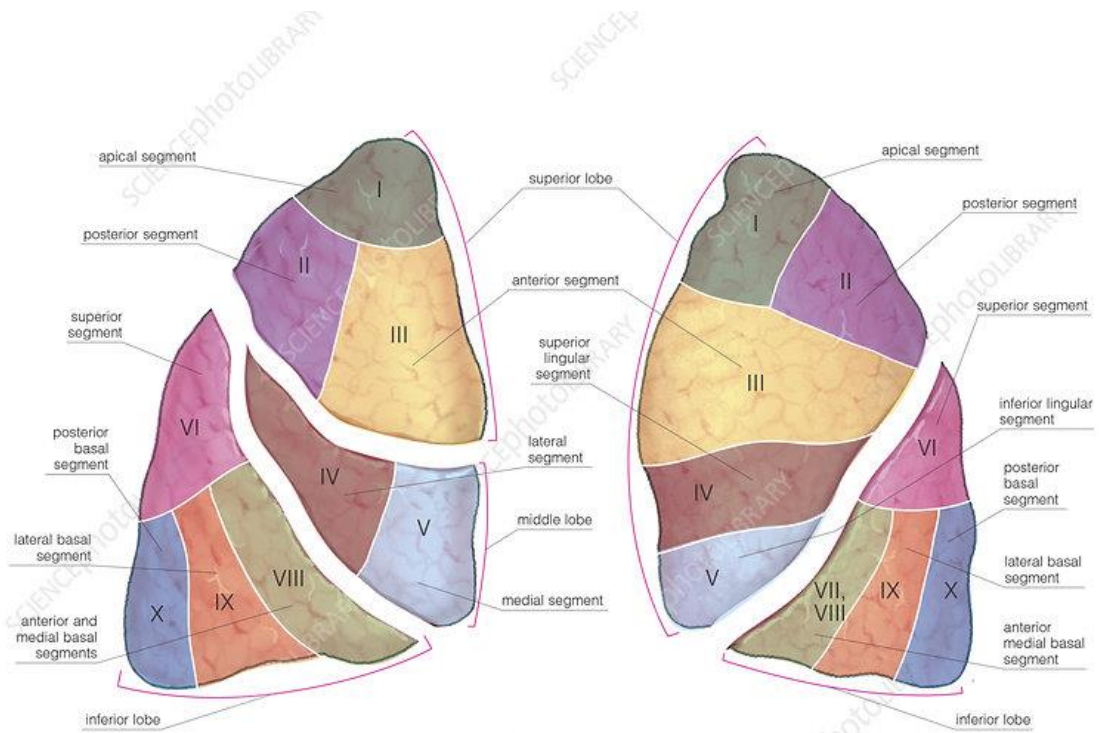
© 2018 STS



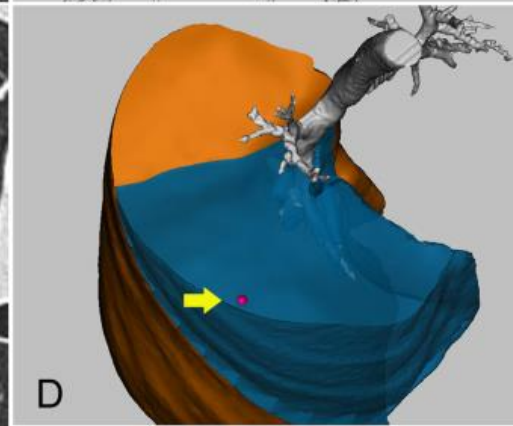
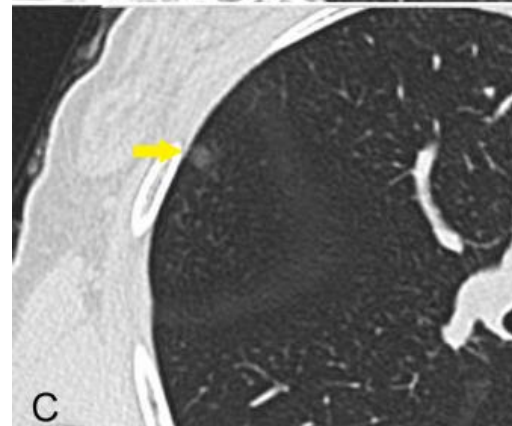
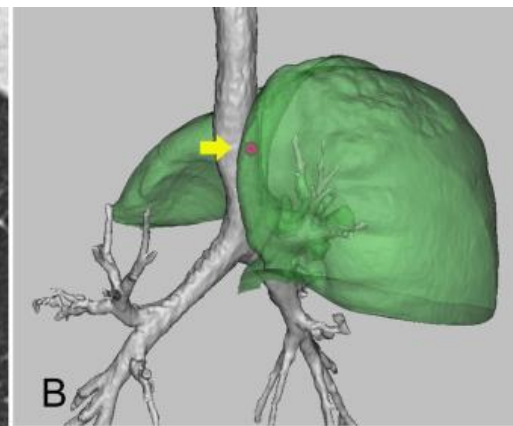
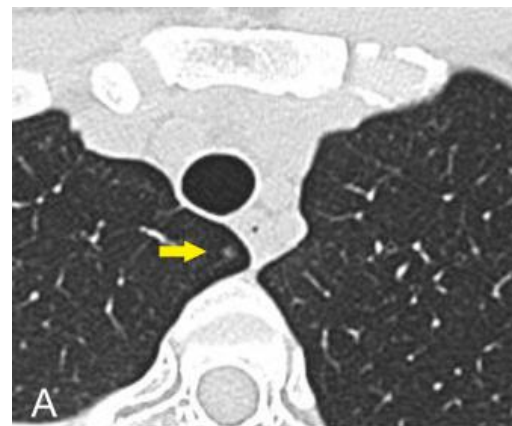
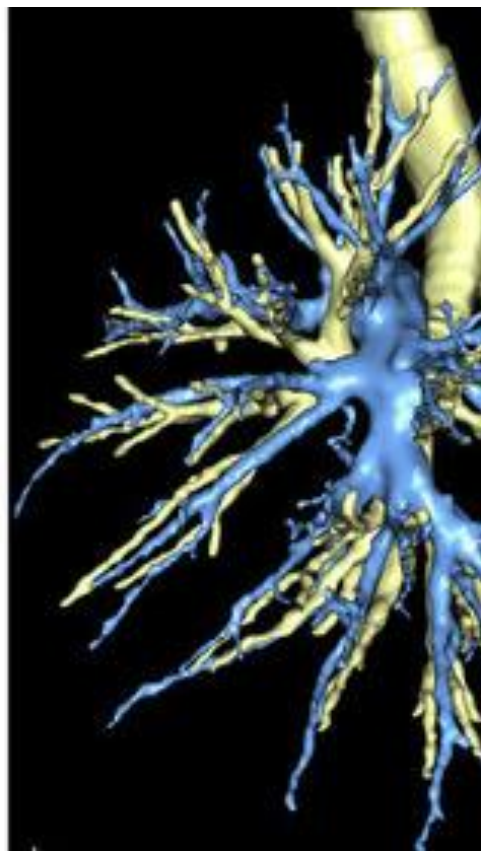
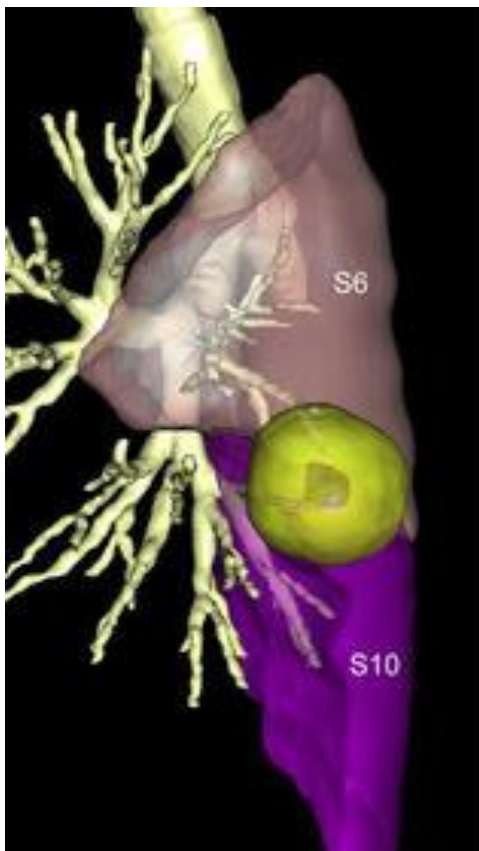
PNEUMONECTOMY



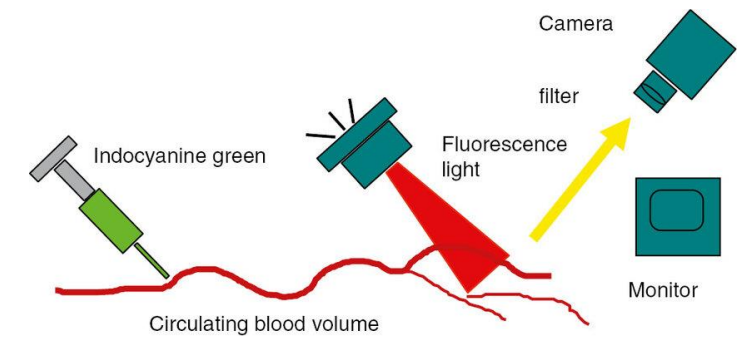
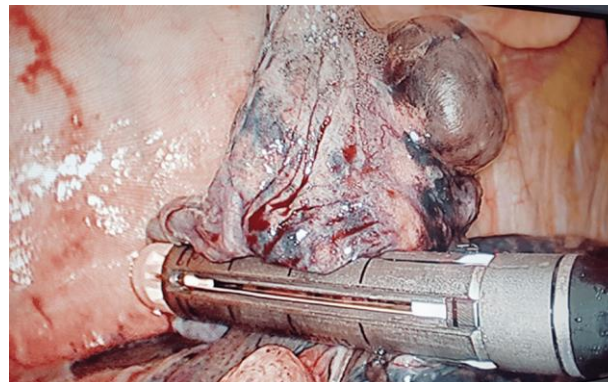
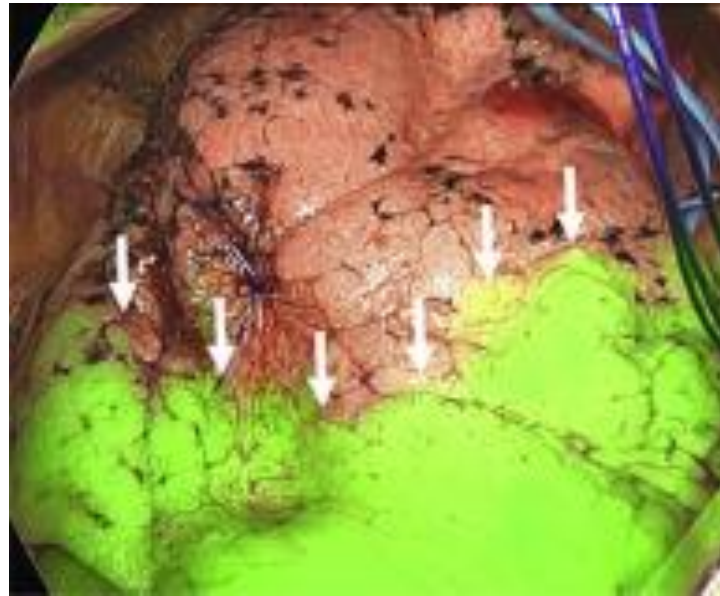
SEGMENTRESEKTION



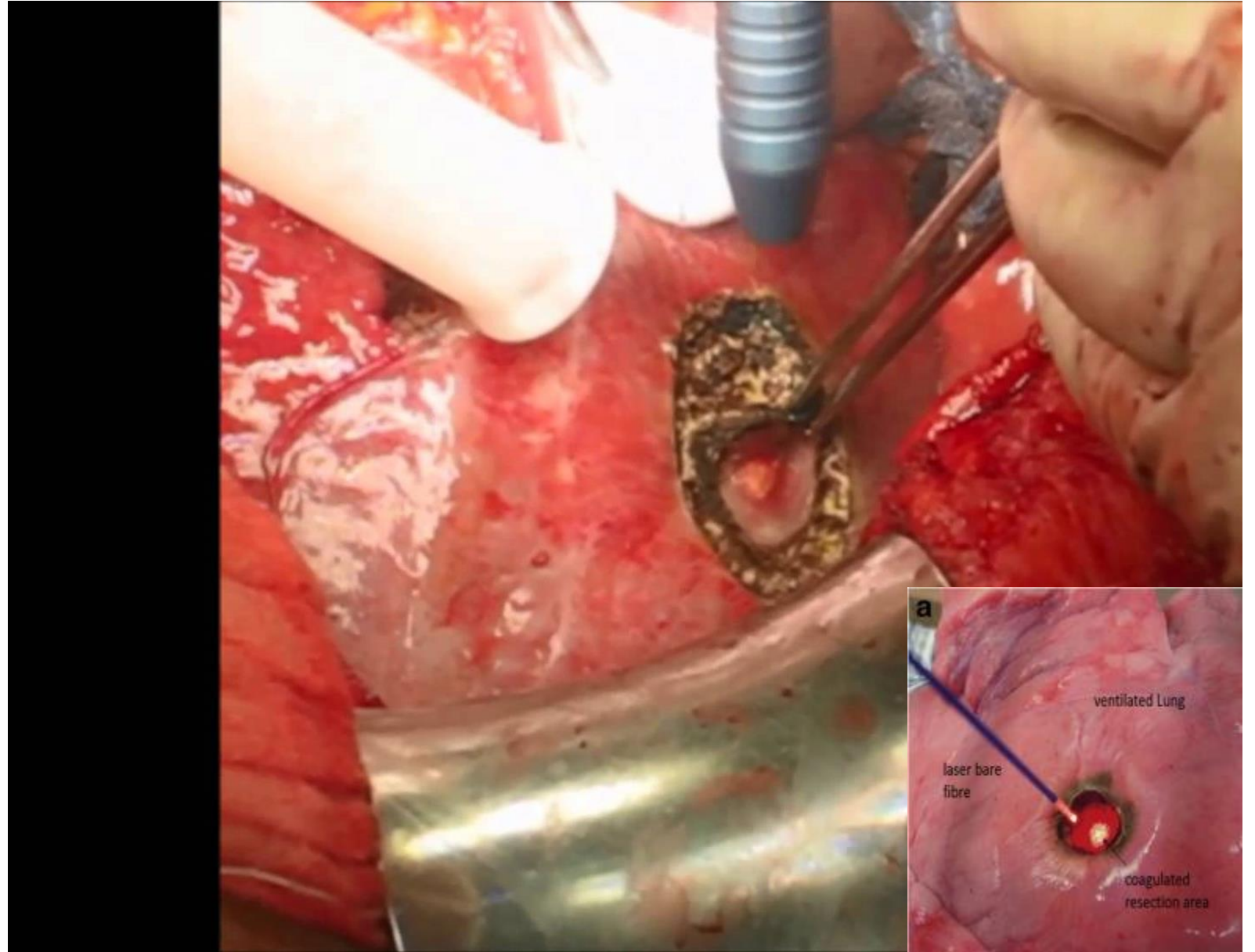
PRE-SEGMENT - 3D VIEW



ICG

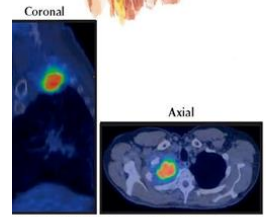
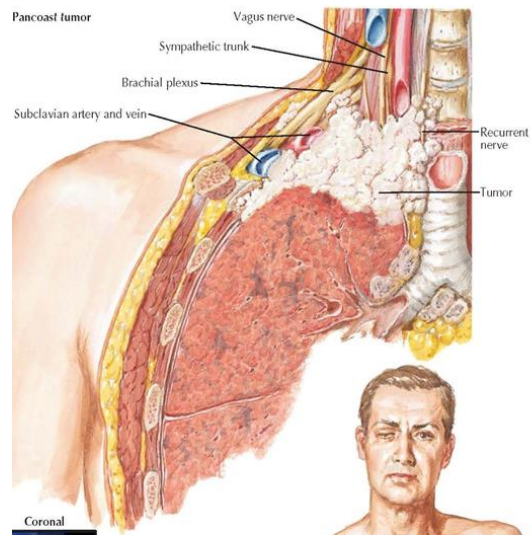


LASER RESECTION



AVANCERAD KIRURGI

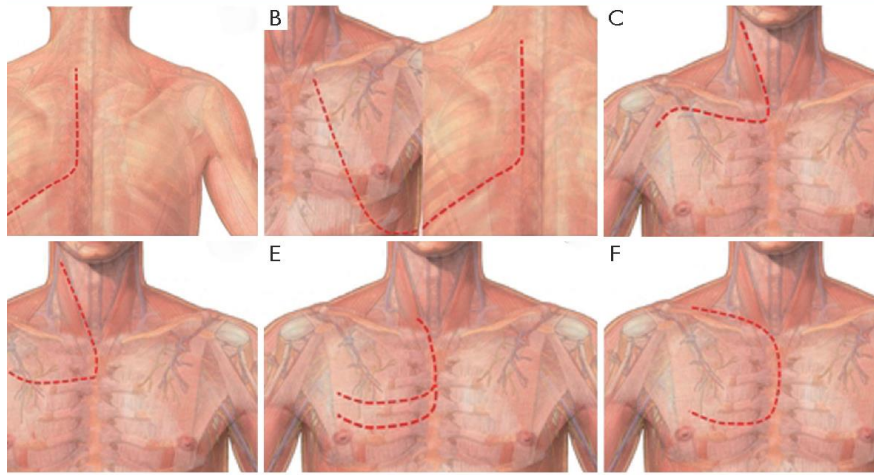




Combined CT/PET images of Pancoast tumor (bright area) seen in coronal and axial views

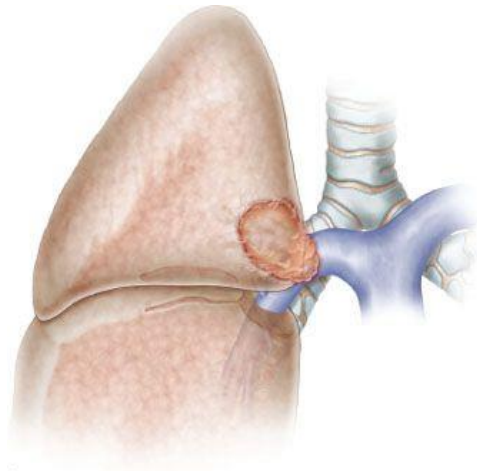


Pancoast syndrome. Horner syndrome, plus pain, paresthesias, and paresis of arm and hand

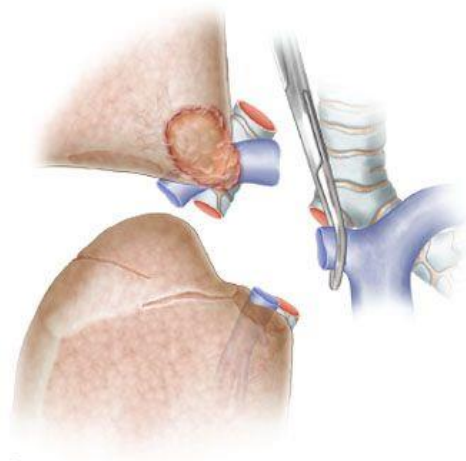


PANCOAST TUMOR

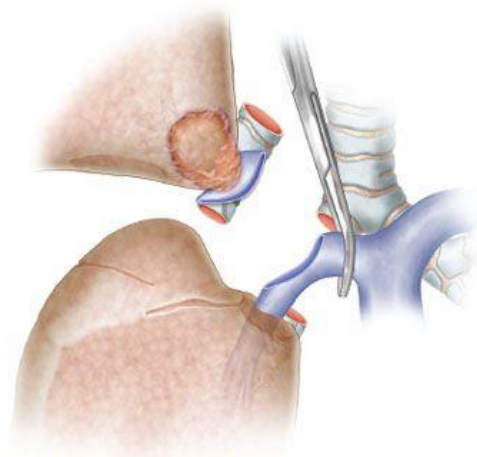
SLEEVE LOBECTOMY



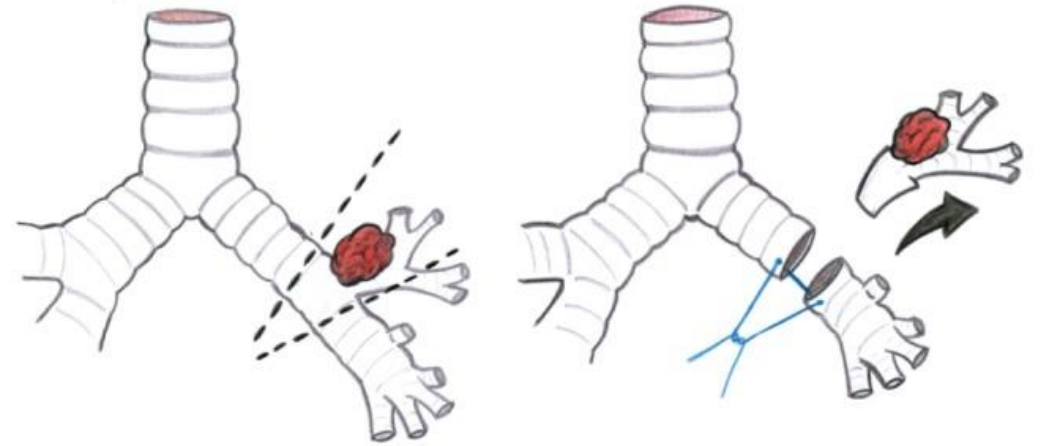
A



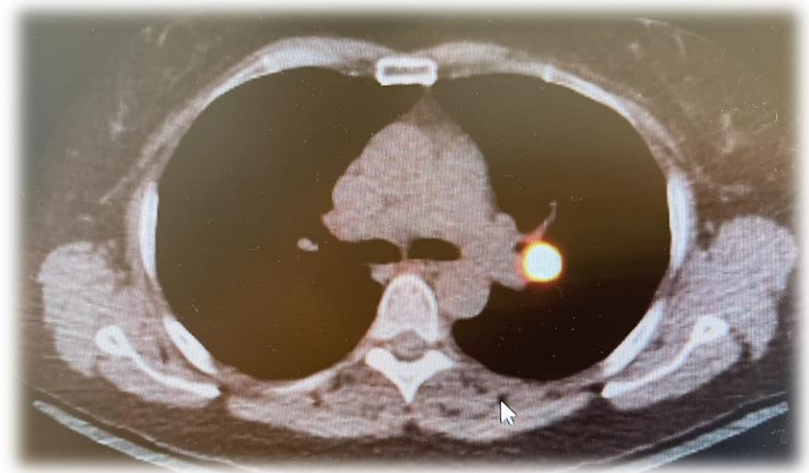
B



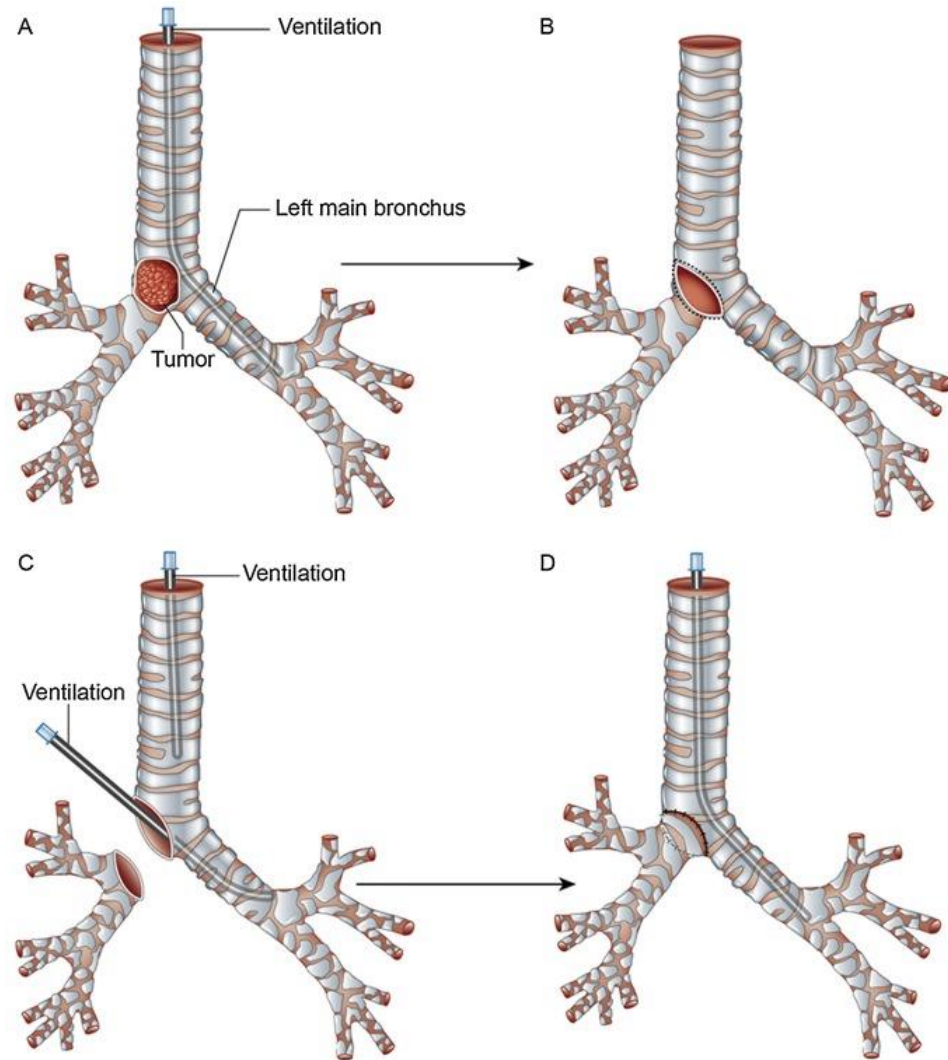
C



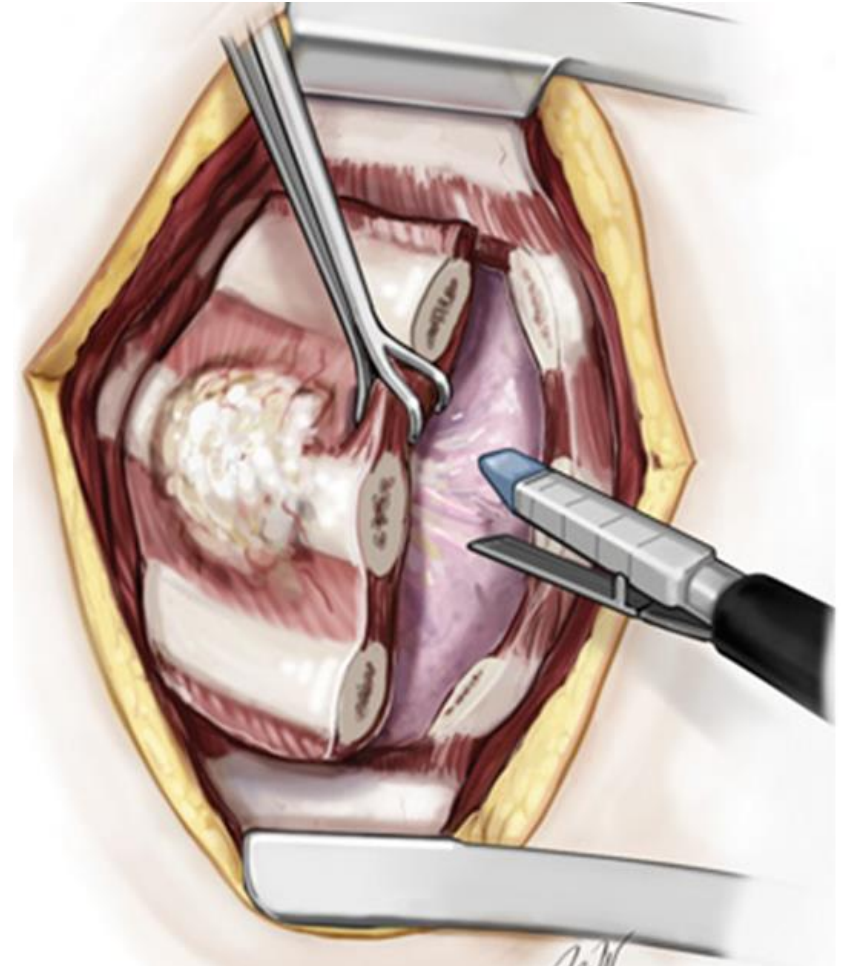
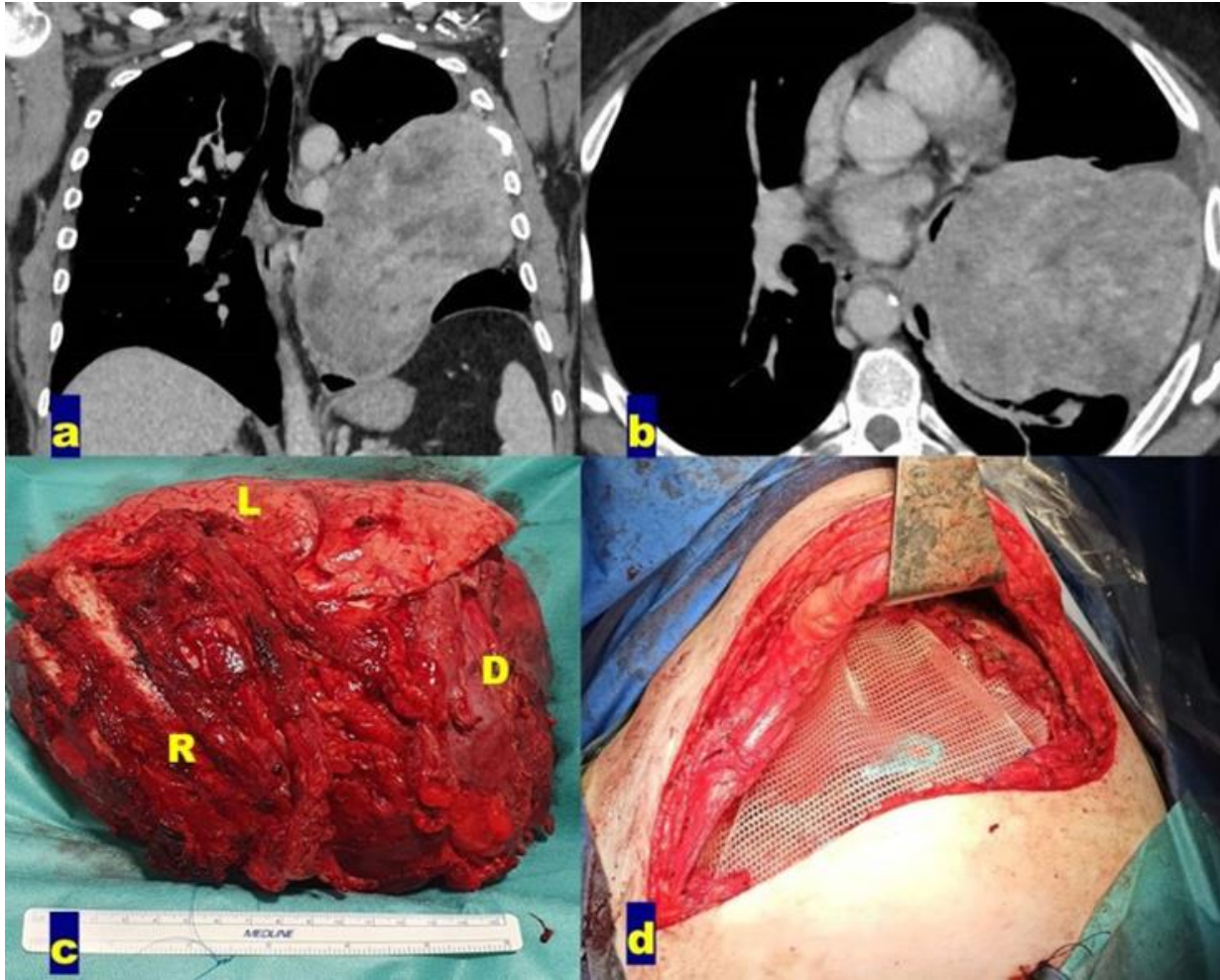
EE



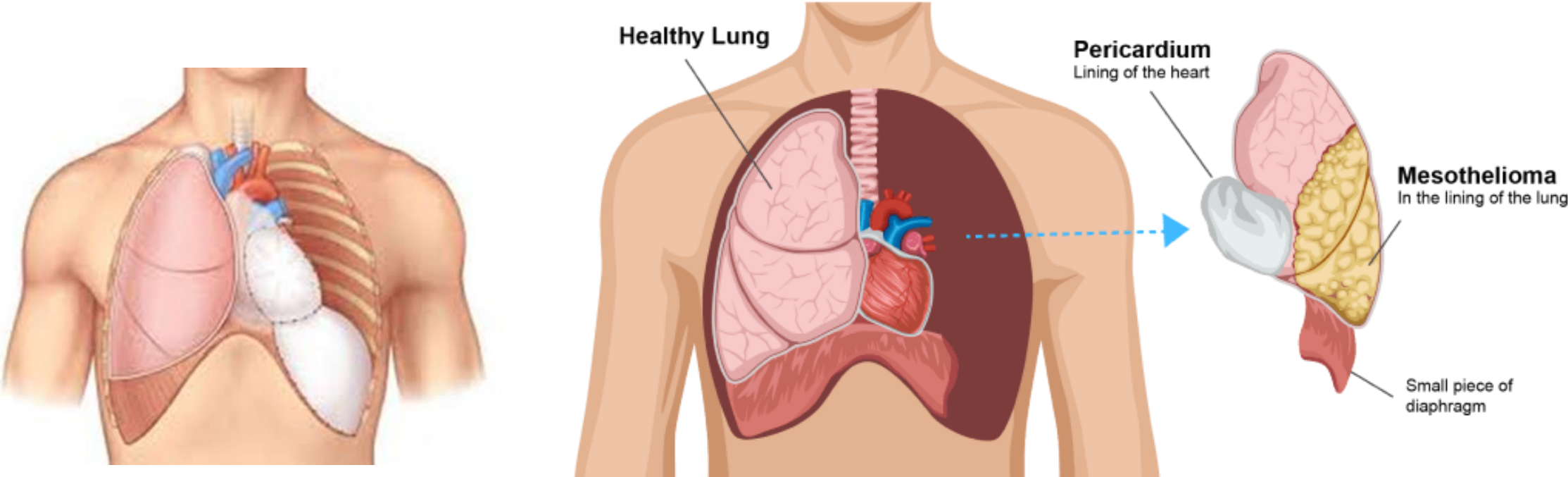
CARINA RESEKTION



RESEKTION AV BRÖSTVÄGGEN REKONSTRUKTION MED IMPLANTAT



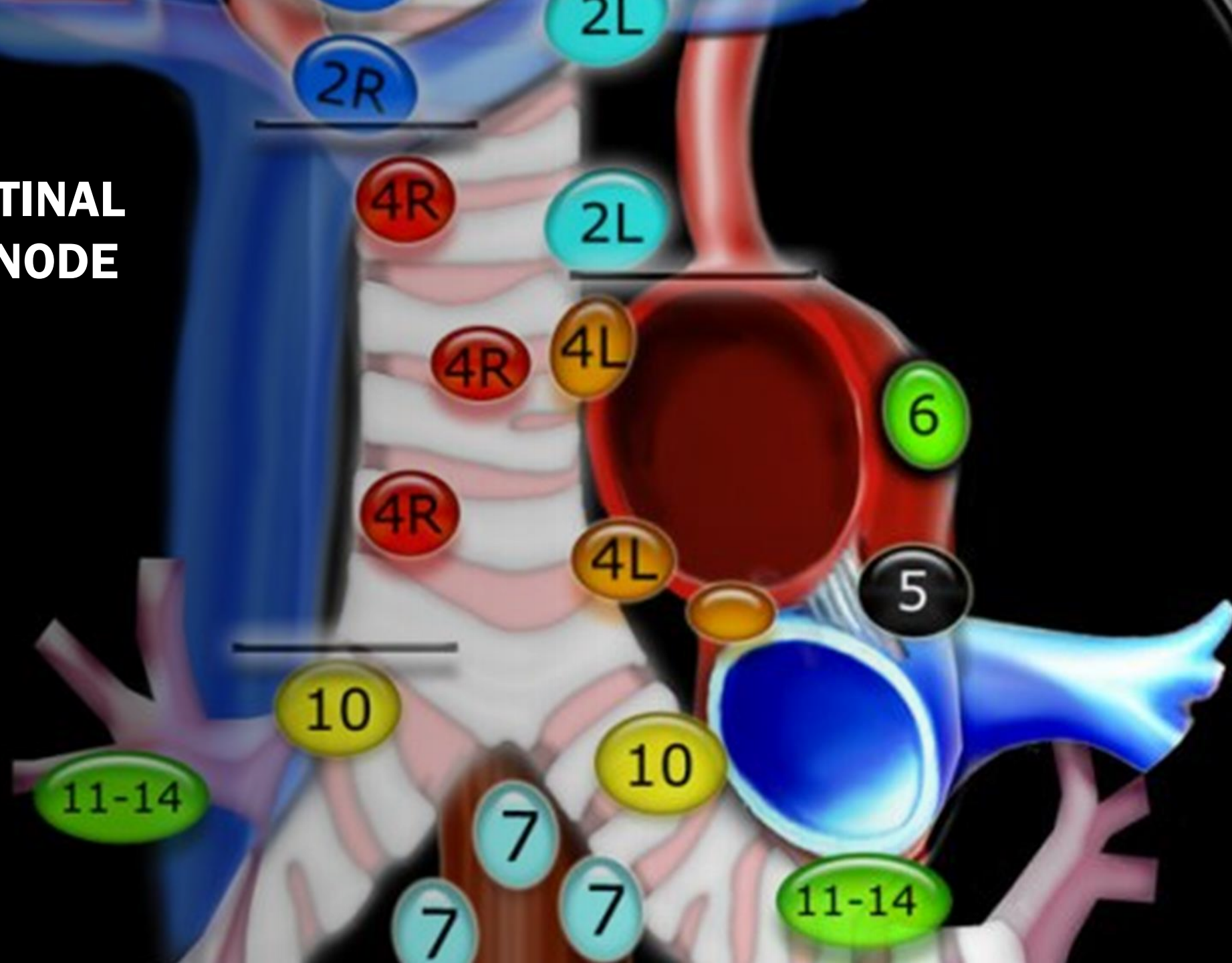
EXTRAPLEURAL PNEUMONECTOMY





**ABOUT
MEDIASTINAL
SURGERY**

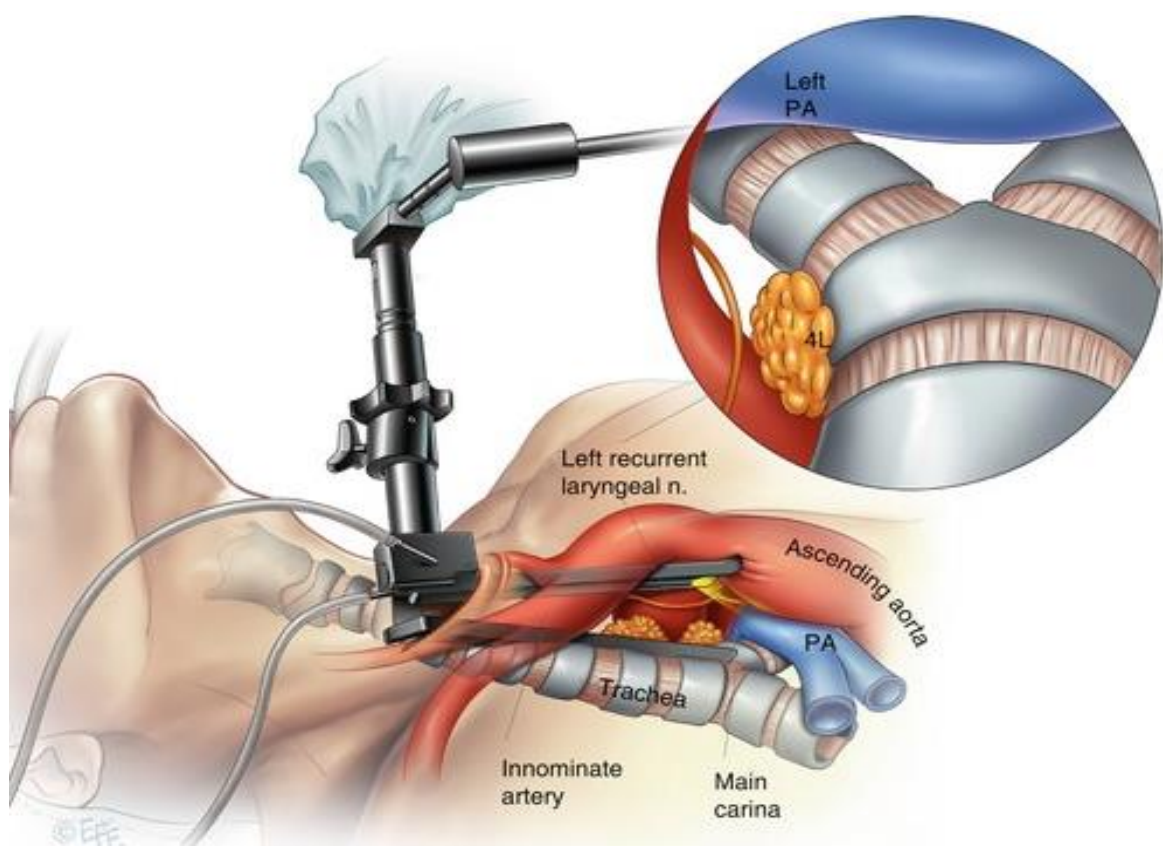
MEDIASTINAL LYMPH NODE





EBUS

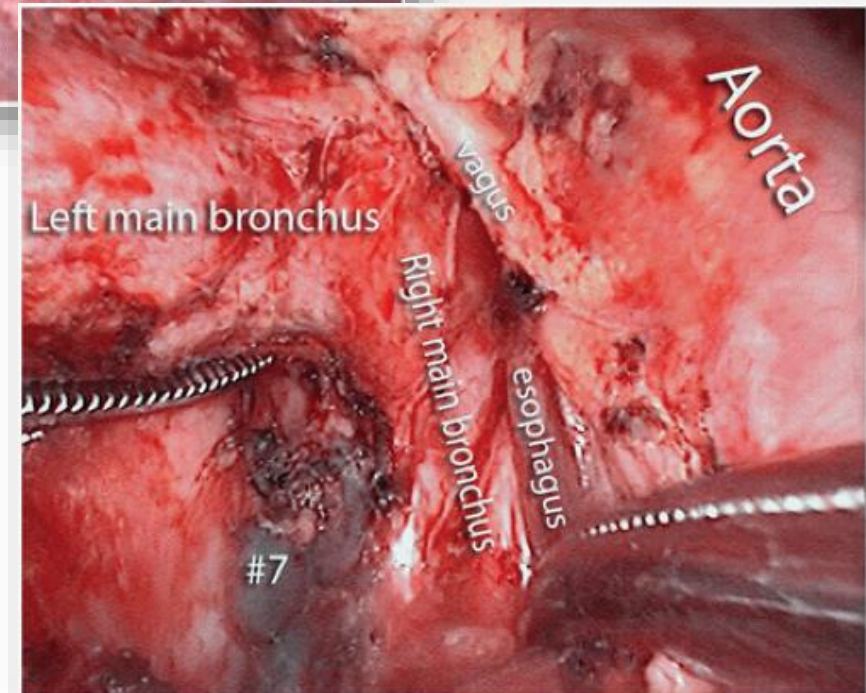
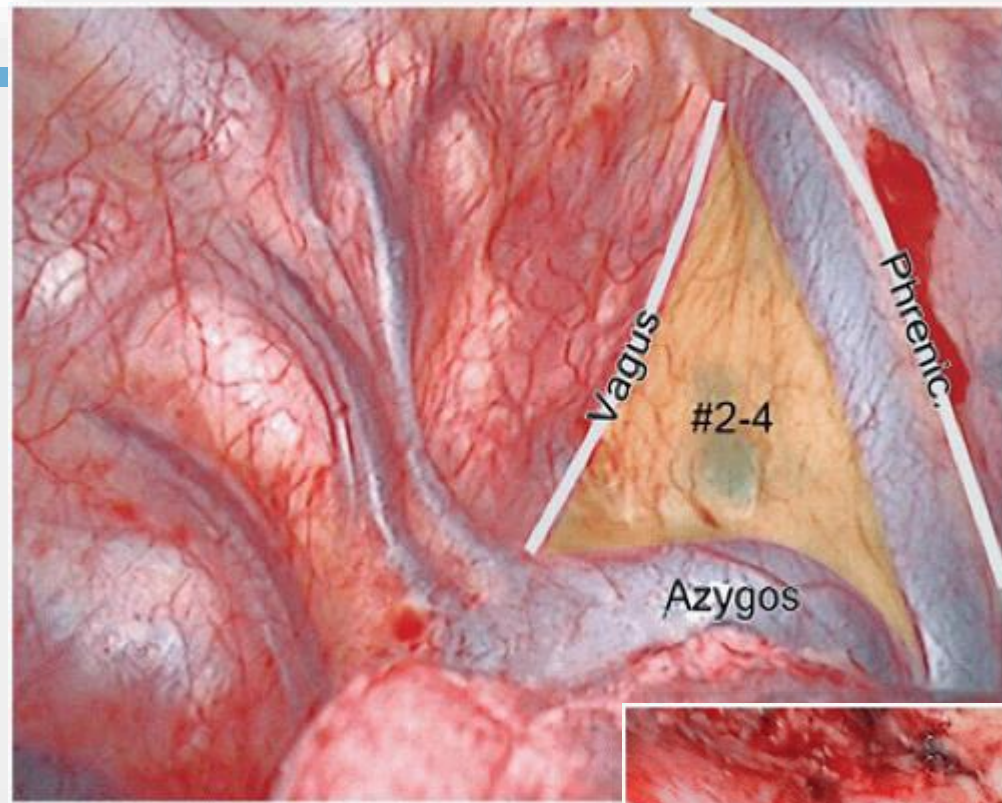




MEDIASTINOSCOPY

VATS

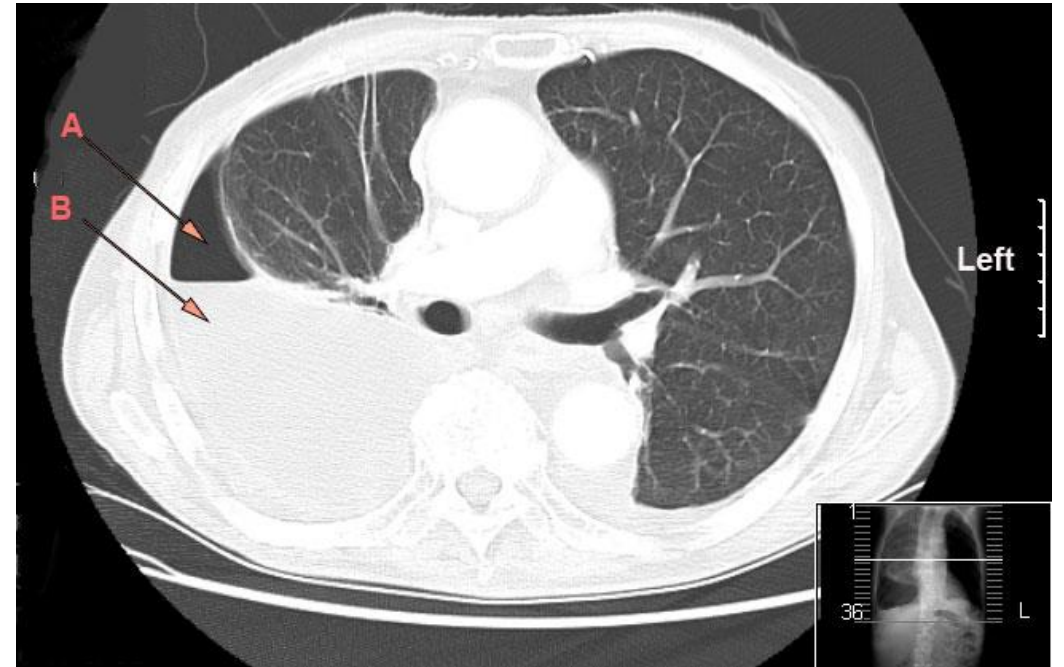
SYSTEMATIC MEDIASTINAL NODAL DISSECTION

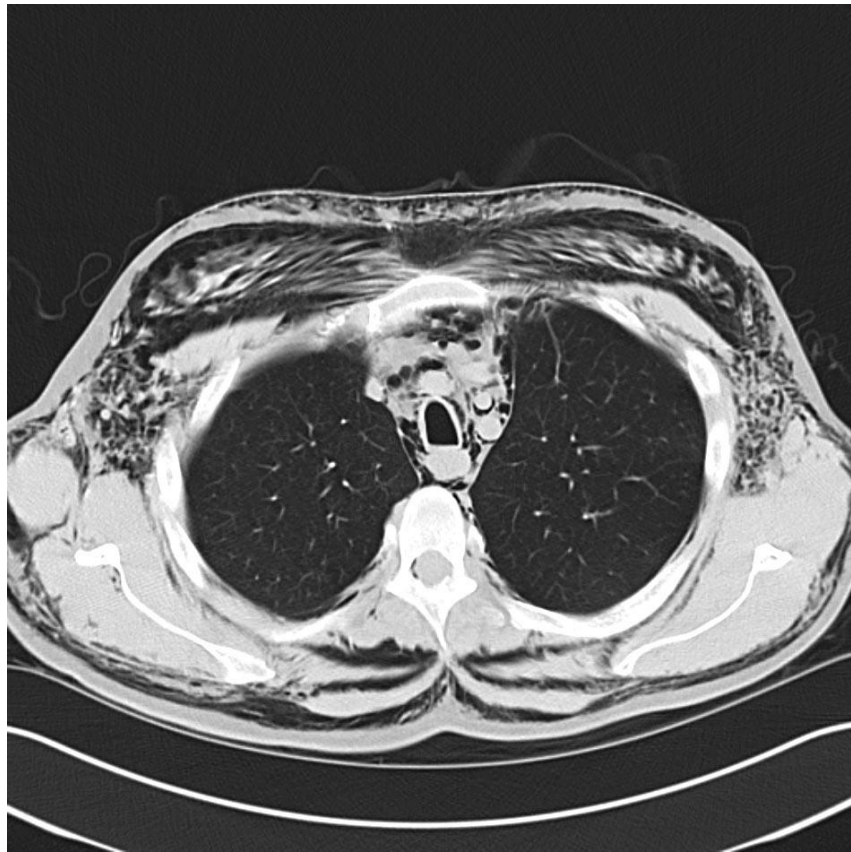


KOMPLIKATIONER



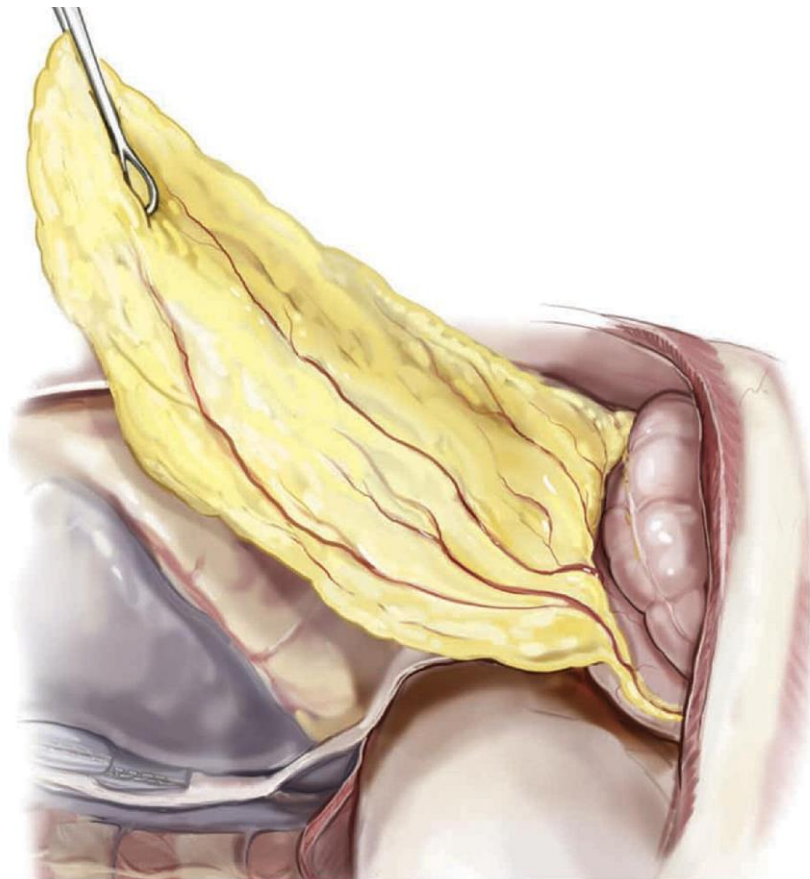
PLEURAEMPYEM



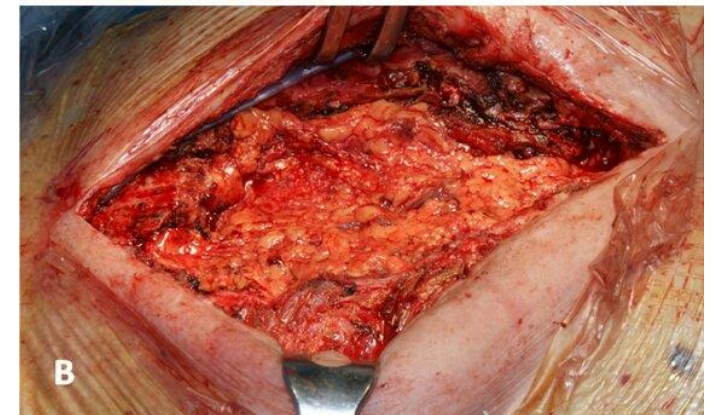
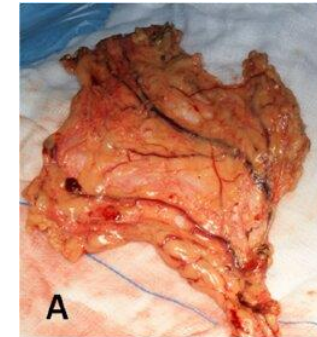
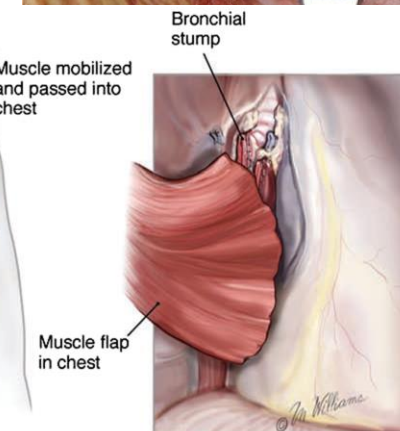
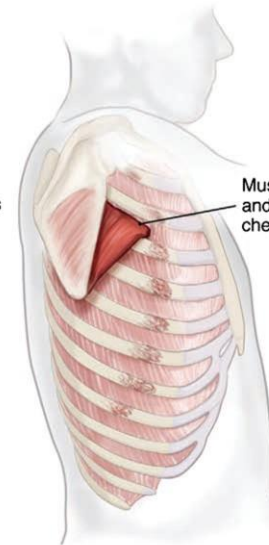
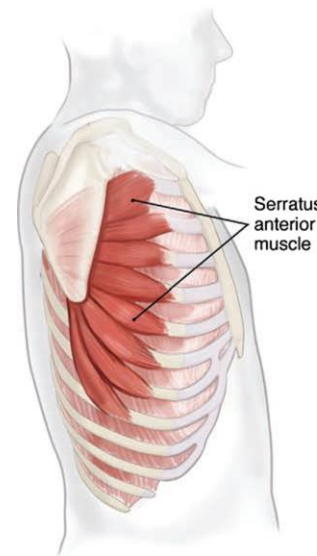


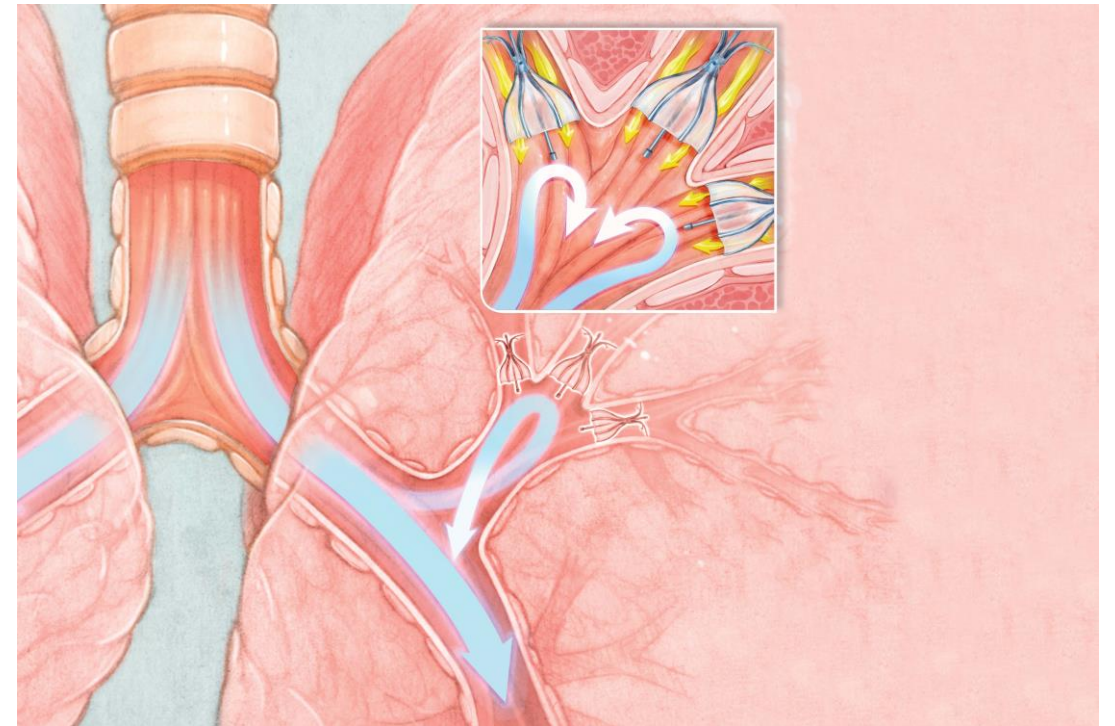
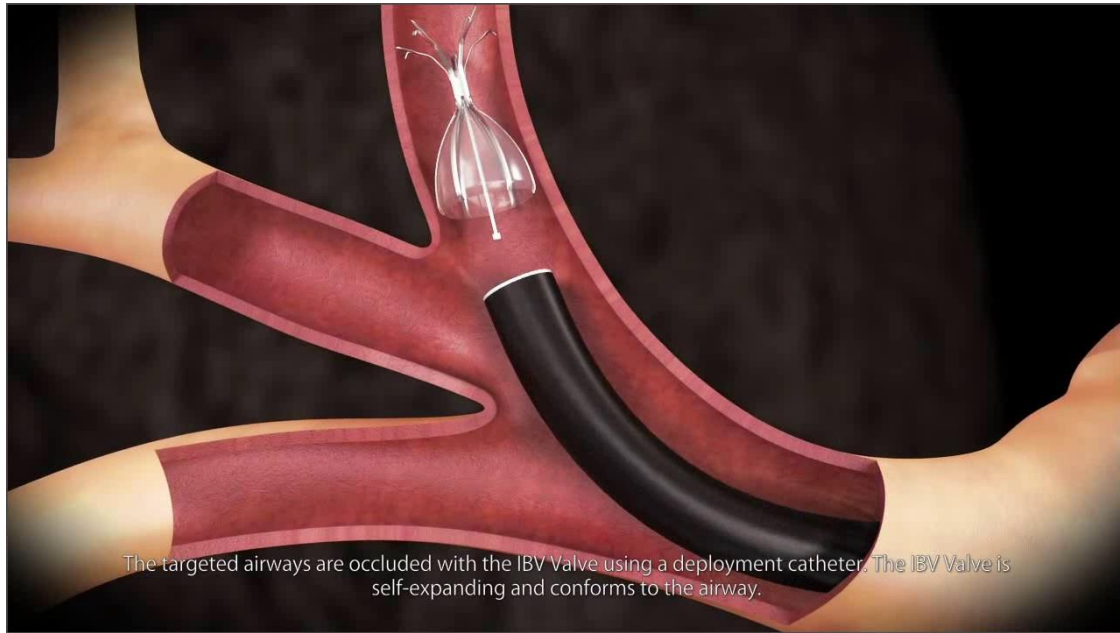
SUBKUTANT EMFYSEM

MUSKUL / OMENTUM LAMBÅ



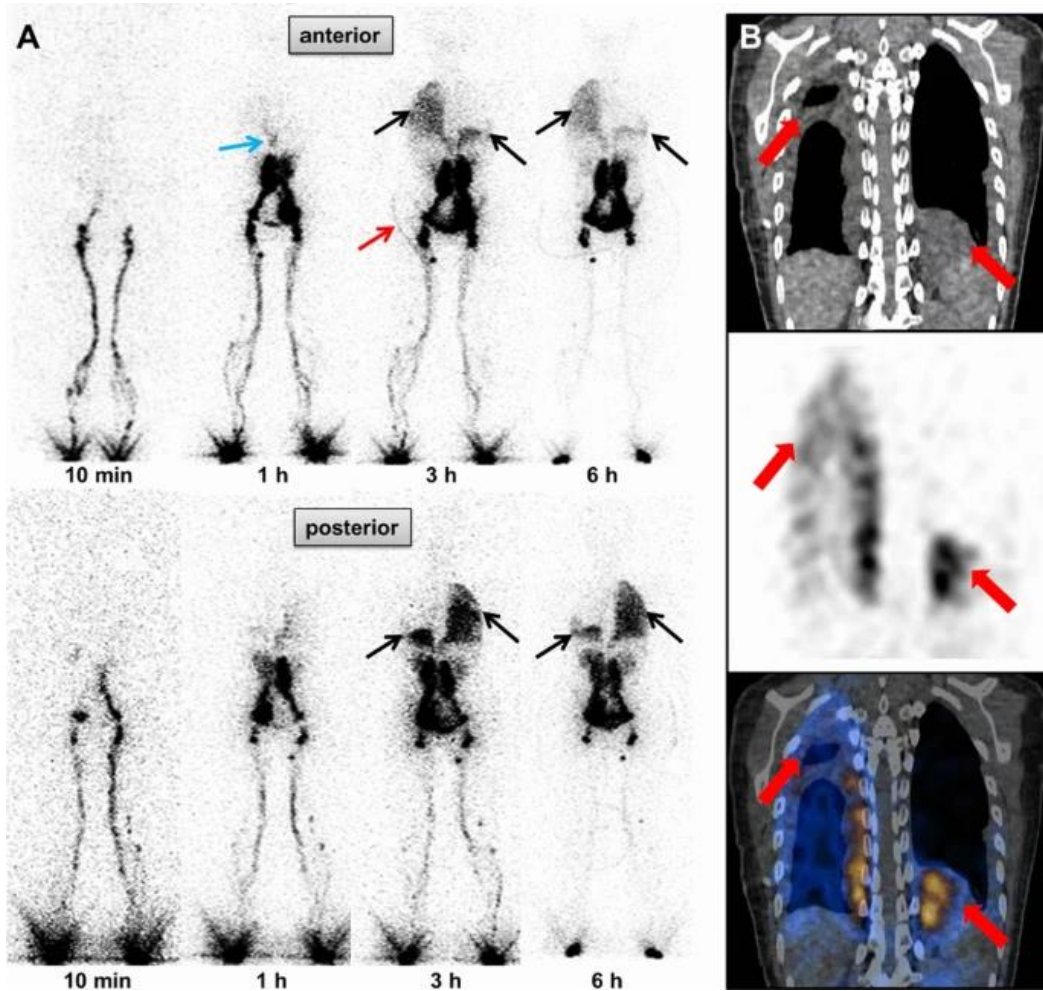
A





INTRABRONCHIAL VALVE SYSTEM

CHYLOTHORAX



Lymphoscintigraphy



MEDIASTINALA TUMÖRER



KIRURGISKA TEKNIK



VATS

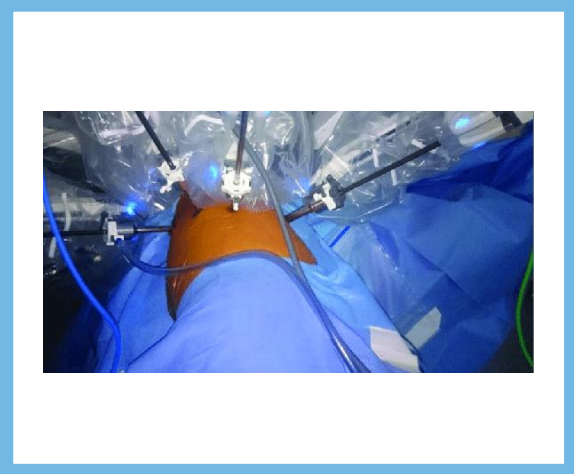


Sternotomy

RATS

**ROBOTIC
THORACIC
SURGERY**

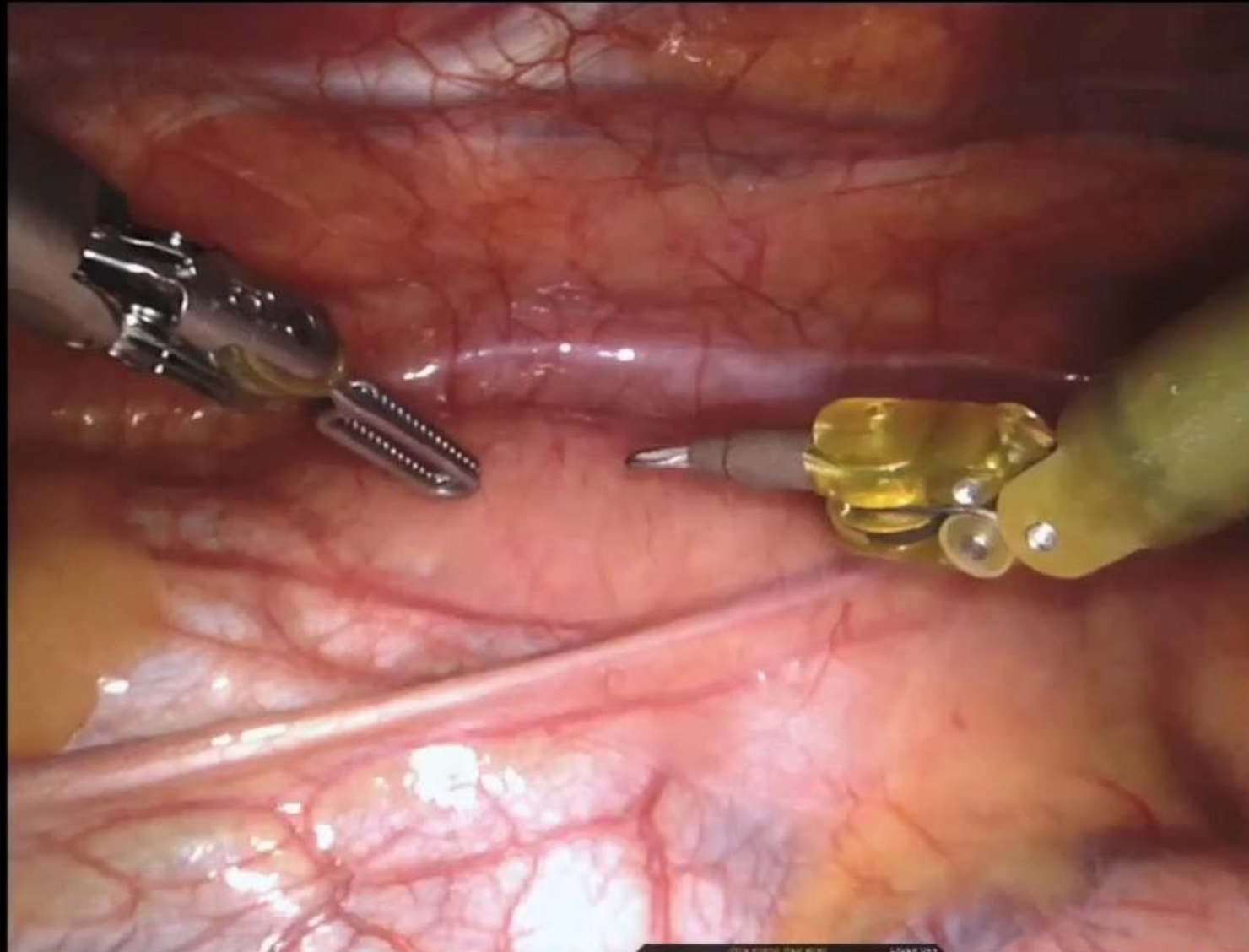






SINGLE PORT ROBOTIC SURGICAL SYSTEM

Robotassisterade tymektomi



1 2 PERFORATOR RIGID AR FORCERS L RIGID AR 3 4 PERMANENT CALIBER SPATULA LUI COAC



THANK
YOU!

